

# Internal Gear Pumps for low-viscosity fluids Series QXV



## 1 General

### 1.1 Product description

The QXV unit is an internal gear pump for low-viscosity fluids. By using several pump stages connected in series, pressures of 300 bar can be developed with high efficiency at viscosities of around 1 mm<sup>2</sup>/s (cSt). The QXV is being used with great success to pump aviation jet fuel, automotive fuels, paraffin oil/kerosene, brake fluids, Pentosin and HFA fluids. Dependent on the requirements of the application, up to five pump stages can be connected in series. The unit is based on the well-known QX internal gear pump, which is

distinguished by its very low noise levels and almost imperceptible pressure pulsations. The large number of closely spaced sizes ensures that the right size is always available for every application

### 1.2 User benefits

- very low noise levels
- negligible pressure pulsations
- 300 bar can be developed at viscosities around 1 mm<sup>2</sup>/s (cSt)
- multi-stage principle ensures low pressure loading on each stage, giving outstanding efficiencies

- hydrodynamic bearing support ensures long service life
- low pump wear since, from moment of start-up, gear ring is also supported hydrostatically
- application experience available for aviation jet fuel, diesel fuel, brake fluids, Pentosin and HFA
- optimised flow path cross-sections and special gear profile give low susceptibility to cavitation
- long service life, since the ball bearing is outside the working fluid envelope
- cast parts are phosphated for good emergency running properties and for corrosion protection

## 2 Technical data

### 2.1 General

Installation attitude	unrestricted
Mounting method (standard)	oval 2-hole flange to ISO 3019/1 (SAE)
Direction of rotation	right or left (but not reversible)
Pump drive method	in-line, through a flexible coupling
Minimum fluid cleanliness	NAS 1638, Class 8 or ISO 4406, code 17 / 14
Viscosity range	0.8...10 mm <sup>2</sup> /s (cSt) (for values outside this range, contact Bucher Hydraulics)
Fluid temperature	80 °C max. (for other temperatures contact Bucher Hydraulics) HFA 50 °C max.
Minimum inlet pressure Maximum pressure at drain port	0.5 - 0.85 bar absolute (dependent on pump frame size and speed, 1.5 bar absolute

## 2.2 Main characteris

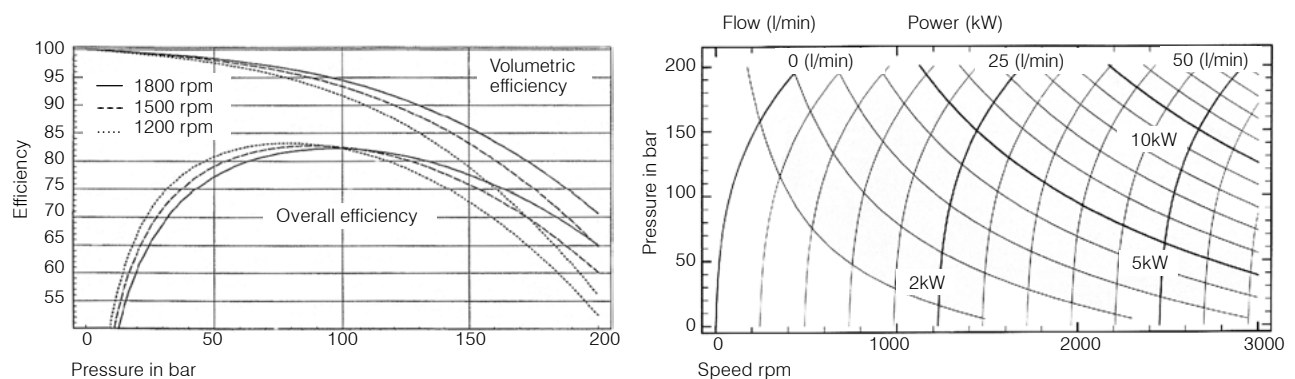
Pressure range	1	2	3	4	5	6	1	2-6	
No. of stages	1	1	2	3	4	5			
Op. pressure	25	50	100	150	200	250			
Displacement cm <sup>3</sup> /rev	Type	Type	Type	Type	Type	Type	Speed <sup>1)</sup> rpm		
005		QXV 22-005	QXV 23-005	QXV 24-005	QXV 25-005	QXV 26-005	3000 3600		
006		QXV 22-006	QXV 23-006	QXV 24-006	QXV 25-006	QXV 26-006			
008		QXV 22-008	QXV 23-008	QXV 24-008	QXV 25-008	QXV 26-008			
010	QXV 21-010	QXV 32-010	QXV 33-010	QXV 34-010	QXV 35-010	QXV 36-010	3000 3600	3000	
012	QXV 21-012	QXV 32-012	QXV 33-012	QXV 34-012	QXV 35-012	QXV 36-012			3600
016	QXV 21-016	QXV 32-016	QXV 33-016	QXV 34-016	QXV 35-016	QXV 36-016			
020	QXV 31-020	QXV 42-020	QXV 43-020	QXV 44-020	QXV 45-020	QXV 46-020	1800 3000	3000	
025	QXV 31-025	QXV 42-025	QXV 43-025	QXV 44-025	QXV 45-025	QXV 46-025			3600
032	QXV 31-032	QXV 42-032	QXV 43-032	QXV 44-032	QXV 45-032	QXV 46-032			
040	QXV 41-040	QXV 52-040	QXV 53-040	QXV 54-040	QXV 55-040	QXV 56-040	1500 1800	1800	
050	QXV 41-050	QXV 52-050	QXV 53-050	QXV 54-050	QXV 55-050	QXV 56-050			3000
063	QXV 41-063	QXV 52-063	QXV 53-063	QXV 54-063	QXV 55-063	QXV 56-063			
080	QXV 51-080	QXV 62-080	QXV 63-080	QXV 64-080	QXV 65-080	QXV 66-080	1500 1800	1500	
100	QXV 51-100	QXV 62-100	QXV 63-100	QXV 64-100	QXV 65-100	QXV 66-100			1800
125	QXV 51-125	QXV 62-125	QXV 63-125	QXV 64-125	QXV 65-125	QXV 66-125			
160	QXV 61-160	QXV 82-160	QXV 83-160	QXV 84-160	QXV 85-160	QXV 86-160	1200 1500	1500	
200	QXV 61-200	QXV 82-200	QXV 83-200	QXV 84-200	QXV 85-200	QXV 86-200			1800
250	QXV 61-250 <sup>2)</sup>	QXV 85-250	QXV 83-250	QXV 84-250	QXV 85-250	QXV 86-250			
320	QXV 81-315 <sup>2)</sup>						1200 1500		
400	QXV 81-400 <sup>2)</sup>								
500	QXV 81-500 <sup>2)</sup>								

- 1) recommended speeds:
- the lower the speed, the smaller the  $\Delta P$ /stage (linear relationship)
  - speeds for 50 and 60 Hz

- 2) Second suction port is necessary for  $n > 1200$  rpm (see 5.3, Special features).

## 3 Performance curves

Example: QXV 45-020 with HFD fluid, 0,8 mm<sup>2</sup>/s (cSt) at 40°C



## 4 Dimensions

### 4.1 Pressure ranges 1 / 2 / 3

Frame size		QXV2			QXV3			QXV4			QXV5			QXV6			QXV8								
Pressure range		1	2	3	1	2	3	1	2	3	1	2	3	1	2	3	1	2	3						
Suction port to SAE J518 <sup>1)</sup>	S	G1" <sup>3)</sup> thread			G1 1/4" <sup>3)</sup> thread			1 1/2"			2"			2 1/2"			3"								
Pressure port to SAE J518 <sup>1)</sup>	P	G1/2" <sup>3)</sup> <sup>4)</sup> thread			G3/4" <sup>3)</sup> <sup>4)</sup> thread			1"			1 1/4"			1 1/2"			2"								
Drain port	R	G 1/4"			G 1/4"			G 1/4"			G 1/4"			G 3/8"			G 1/2"								
Mounting: oval 2-hole flange to ISO 3019/1 (SAE)	A	118			132			170			212			267			330								
	B (SAE)	-			106			146			181			229			-								
	B (Metr.)	100			109			140			180			224			280								
	C	9			11			14			18			22			26								
	N (SAE)	-			82,55 - 0,05			101,6 - 0,05			127 - 0,05			152,4 - 0,05			-								
ISO 3019/2 (metric)	N (Metr.)	63 h8			80 h8			100 h8			125 h8			160 h8			200 h8								
	O	10			10			12			14			18			22								
	V	6			6			7			7			7			9								
4-hole flange ISO 3019/2	X (Metr.)	9			9			12			14			18			22								
	Y (Metr.)	85			103			125			160			200			250								
Shaft end: parallel, to ISO / R775 <sup>2)</sup>	D	20 j6			25 j6			32 j6			40 j6			50 j6			63 j6								
	E	36			42			58			82			82			150								
	F	6			8			10			12			14			18								
	G	22,5			28			35			43			53,5			67								
	I	45			50			68			92			92			117								
Housing	K	37,5			44			52,5			60,5			74			90								
	L	136	118	153	164	144	189	202	176	232	242	210	280	288	248	338	361	331	426						
	M	-	55	90	-	69,5	114	-	87	143	-	102	172	-	119	209	-	151	266						
	T	85			107			133			177			214			220			273			275		
	Z	50			60			62,5			78			97,5			125								
Weight	kg	5	5	6,5	10	9,5	12,5	18	17	22	33	31	40	64	60	76	130	120	160						

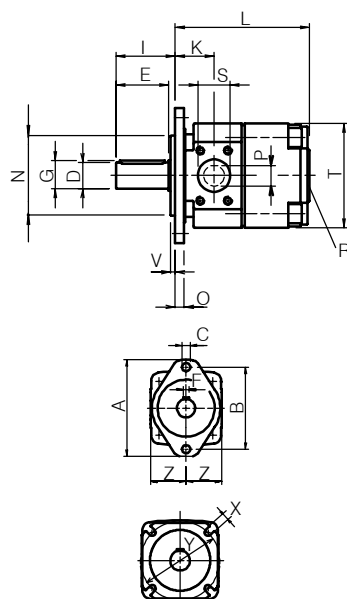
1) for pipe flange dimensions see brochure P00049

2) for other shaft ends, contact Bucher

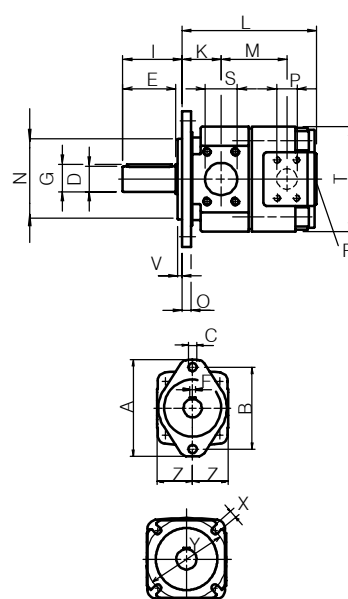
3) threaded ports to DIN 3852, Part 2

4) pressure port to SAE J 518 is possible for pressure ranges 2+3

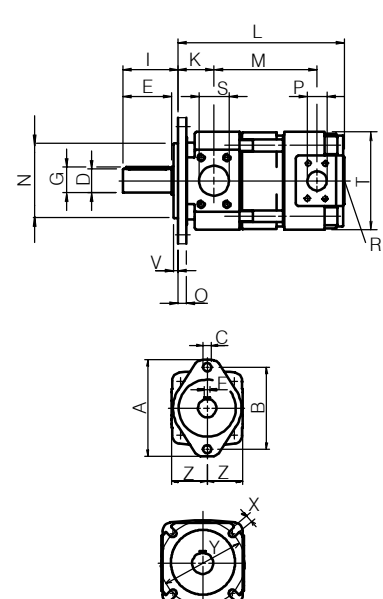
#### Pressure range 1



#### Pressure range 2



#### Pressure range 3



### 4.2 Pressure ranges 4 / 5 / 6

Frame size		QXV2			QXV3			QXV4			QXV5			QXV6			QXV8								
Pressure range		4	5	6	4	5	6	4	5	6	4	5	6	4	5	6	4	5	6						
Suction port to SAE J518 <sup>1)</sup>	S	G1" <sup>3)</sup> thread			G1 1/4" <sup>3)</sup> thread			1 1/2"			2"			2 1/2"			3"								
Pressure port to SAE J518 <sup>1)</sup>	P	G1/2" <sup>3)</sup> <sup>4)</sup> thread			G3/4" <sup>3)</sup> <sup>4)</sup> thread			1"			1 1/4"			1 1/2"			2"								
Drain port	R	G 1/4"			G 1/4"			G 1/4"			G 1/4"			G 3/8"			G 1/2"								
Mounting: oval 2-hole flange to ISO 3019/1 (SAE)	A	118			132			170			212			267			330								
	B (SAE)	-			106			146			181			229			-								
	B (Metr.)	100			109			140			180			224			280								
ISO 3019/2 (metric)	C	9			11			14			18			22			26								
	N (SAE)	-			82,55 - 0,05			101,6 - 0,05			127 - 0,05			152,4 - 0,05			-								
	N (Metr.)	63 h8			80 h8			100 h8			125 h8			160 h8			200 h8								
	O	10			10			12			14			18			22								
4-hole flange ISO 3019/2	V	6			6			7			7			7			9								
	X (Metr.)	9			9			12			14			18			22								
Shaft end: parallel, to ISO R775 <sup>2)</sup>	Y (Metr.)	85			103			125			160			200			250								
	D	20 j6			25 j6			32 j6			40 j6			50 j6			63 j6								
Housing	E	36			42			58			82			82			150								
	F	6			8			10			12			14			18								
	G	22,5			28			35			43			53,5			67								
	I	45			50			68			92			92			117								
	K	37,5			44			52,5			60,5			74			90								
Weight	L	188	223	258	234	279	324	288	344	400	350	420	490	428	518	608	541	656	771						
	M	125	160	195	160	205	250	199	255	311	242	312	382	299	389	479	381	496	611						
	T	85			107			133			177			214			220			273			275		
	Z	50			60			62,5			78			97,5			125								

1) for pipe flange dimensions see brochure P00049

2) for other shaft ends, contact Bucher

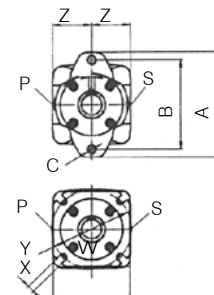
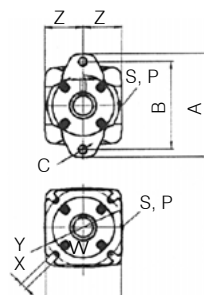
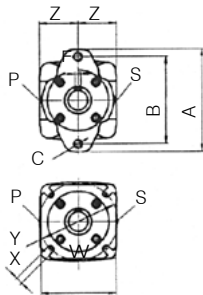
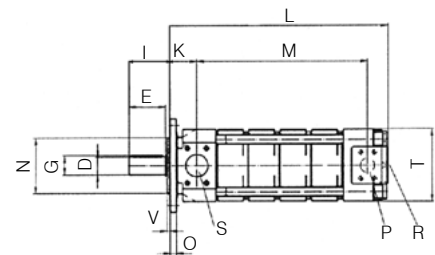
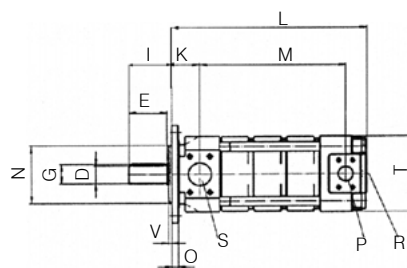
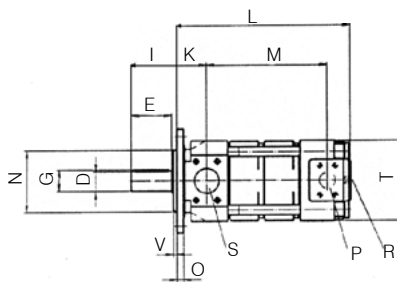
4) pressure port to SAE J 518 is possible

3) threaded ports to DIN 3852, Part 2

#### Pressure range 4

#### Pressure range 5

#### Pressure range 6



## 5 Ordering details

	Q	X	V	3	6	-	0	1	2	R	*	*	*	*	*
Series: internal gear pump for low viscosity fluids	QXV			36		-	012			R	* * * * *				
Frame size				2 / 3 / 4 / 5 / 6 / 8											
Pressure range				1 / 2 / 3 / 4 / 5 / 6											
Geom. displacement in cm <sup>3</sup> /rev				005 - 500											
Direction of rotation				right = R left = L											
Variants / special features (to be inserted by the factory, see section 5.3 for selection)															

### 5.1 Ordering example:

Required: internal gear pump QXV  
 Displacement: 12 cm<sup>3</sup>/rev  
 Continuous pressure: 250 bar  
 For use with diesel fuel:  
 Ordering code: QXV 36-012 R

### 5.2 Standard configuration

- direction of rotation - right, alternatively left
- 2-hole mounting flange to ISO 3019/1: sizes QXV 3-6
- 2-hole mounting flange to ISO 3019/2: sizes QXV 2+8
- Viton seals
- parallel shaft end to ISO R775
- separate drain port in pump rear cover

QXV 2-5 : G1/4"

QXV 6 : G3/8"

QXV 8 : G1/2"

### 5.3 Special features

- 12 2-hole mounting flange to ISO 3019/2 (metric): sizes QXV 3-6
- 66 4-hole mounting flange to ISO 3019/2 (metric): sizes QXV 3-6
- 83 second suction port on QXV 61 SAE 2"
- second suction port on QXV 81 SAE 2 1/2"

For other special features, contact Bucher

## 6 Recommendations for use

- good filtration is extremely important with low viscosity fluids. We recommend a fluid cleanliness level of NAS 1638, Class 8 or better.
- compared to QX pumps, QXV pumps are operated at higher speeds
- we recommend that the fluid level in the reservoir should be above the centre line of the pump
- when commissioning the QXV pump, it must be started under no-load conditions. It is beneficial to hand-fill the pump before the first start-up.
- The pump must not be run under pressure until the fluid is free of air bubbles
- the pump must be driven by means of a flexible coupling
- The temperature difference between pump and fluid must not exceed 20 °C

## BUCHER HYDRAULICS

[www.bucherhydraulics.com](http://www.bucherhydraulics.com)

### Germany

Phone +49 7742 85 20  
Fax +49 7742 71 16  
[info.de@bucherhydraulics.com](mailto:info.de@bucherhydraulics.com)

### France

Phone +33 389 64 22 44  
Fax +33 389 65 28 78  
[info.fr@bucherhydraulics.com](mailto:info.fr@bucherhydraulics.com)

### Netherlands

Phone +31 79 34 26 24 4  
Fax +31 79 34 26 28 8  
[info.nl@bucherhydraulics.com](mailto:info.nl@bucherhydraulics.com)

### UK

Phone +44 24 76 35 35 61  
Fax +44 24 76 35 35 72  
[info.uk@bucherhydraulics.com](mailto:info.uk@bucherhydraulics.com)

### USA

Phone +1 262 605 82 80  
Fax +1 262 605 82 78  
[info.wi@bucherhydraulics.com](mailto:info.wi@bucherhydraulics.com)

### Switzerland

Phone +41 33 67 26 11 1  
Fax +41 33 67 26 10 3  
[info.ch@bucherhydraulics.com](mailto:info.ch@bucherhydraulics.com)

### Italy

Phone +39 0522 92 84 11  
Fax +39 0522 51 32 11  
[info.it@bucherhydraulics.com](mailto:info.it@bucherhydraulics.com)

### Austria

Phone +43 6216 44 97  
Fax +43 6216 44 97 4  
[info.at@bucherhydraulics.com](mailto:info.at@bucherhydraulics.com)

### China

Phone +86 10 64 44 32 38  
Fax +86 10 64 44 32 35  
[info.bj@bucherhydraulics.com](mailto:info.bj@bucherhydraulics.com)

### Product Center (Elevator)

Phone +41 41 757 03 33  
Fax +41 41 755 16 49  
[info.nh@bucherhydraulics.com](mailto:info.nh@bucherhydraulics.com)

We reserve the right of modification without prior notice.