



FT 243/2

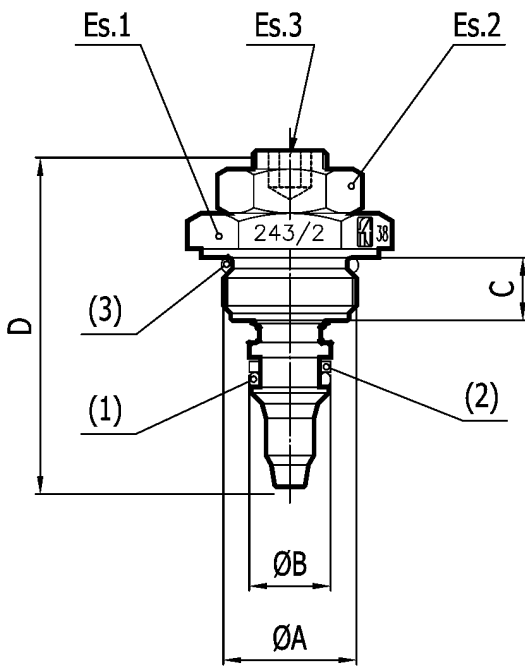


## MATERIALS

BODY	ETG 100
NEEDLE	35SMNP810 - AISI 303
OR	NITRILE
NUT	35SMNP810
BK	PTFE

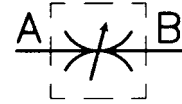
## EXAMPLE FOR ORDERING

	CODE	TYPE	VITON SEAL
STEEL	FT 243/2	34	V
STAINLESS STEEL	FT 2243/2	34	-



## DIMENSIONS

TYPE	ØA	ØB	C	D	Es.1	Es.2	Es.3	(1) OR	(2) BK	(3) OR	ØF	ØG
14	M17x1	10	8.5	44.5	22	17	4	106	106	2056	26	17.5
38	M18x1	11	8.5	45.5	24	17	5	2031	2031	2062	28	18.5
12	M22x1.5	14	13.5	66.5	27	19	7	2043	2043	2075	33	22.5
34	M27x1.5	18	18	82	32	22	9	2056	2056	3093	35	28



## DOUBLE-ACTING BRAKING VALVES

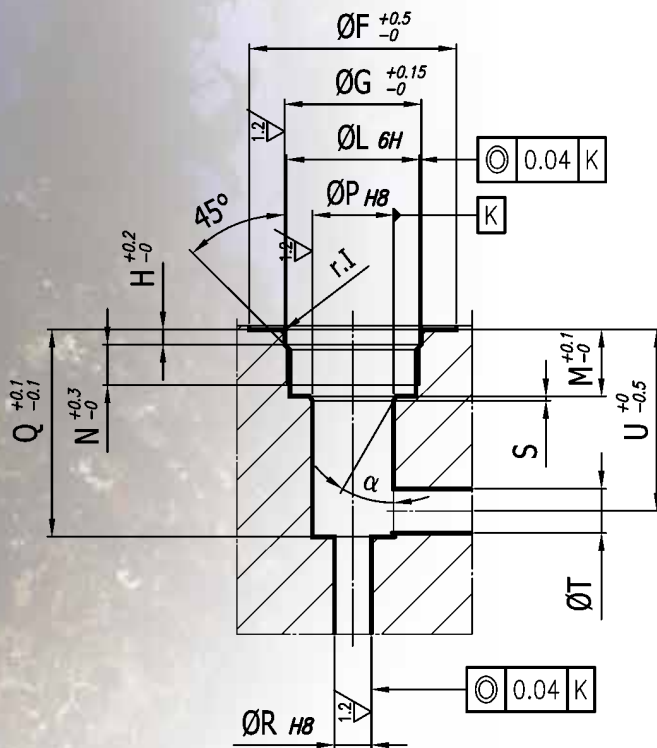
They are composed of a needle throttling which allows a very sensitive control. They can be used in the assembling in manifolds and integrated blocks and are also used as cylinder braking valves.

Recommended filtration: 60 micron or inferior.  
Max. working pressure: 300 bar

On request  
Version in AISI 316 code FT 2243/2



FT 243/2

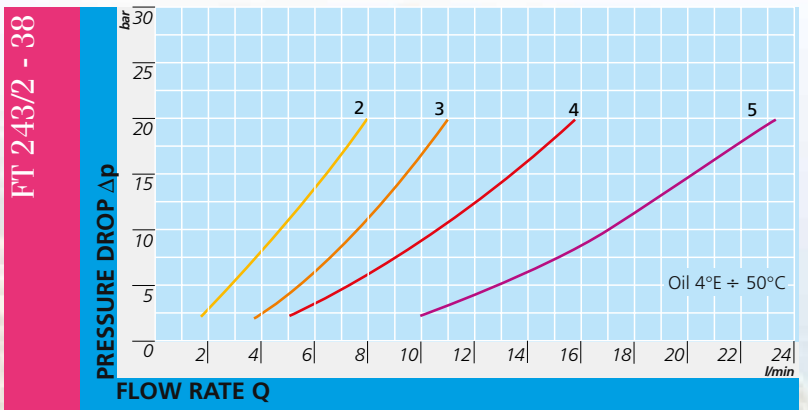
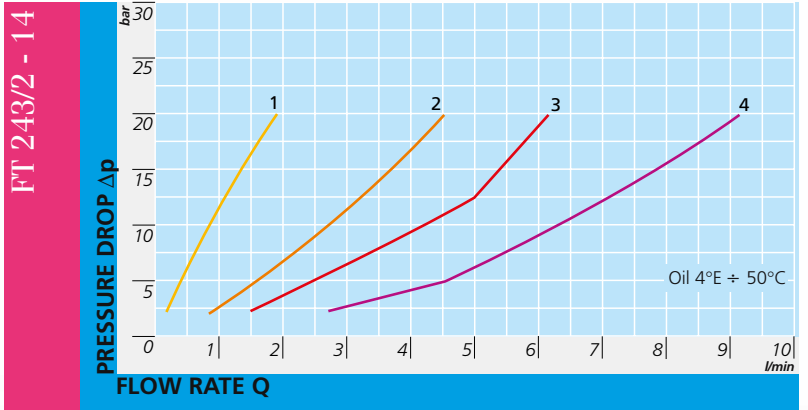


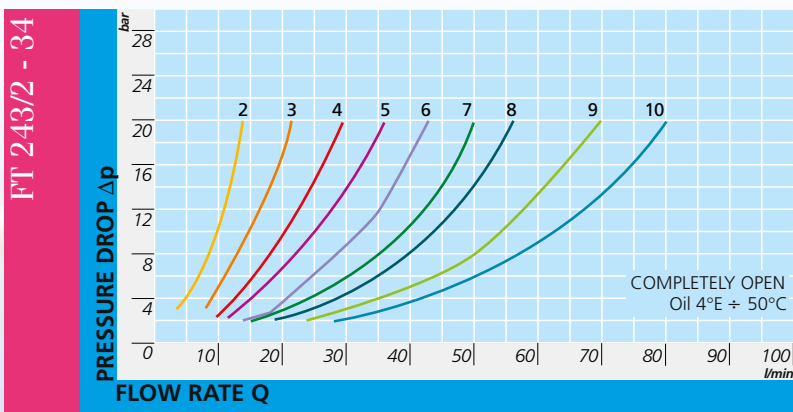
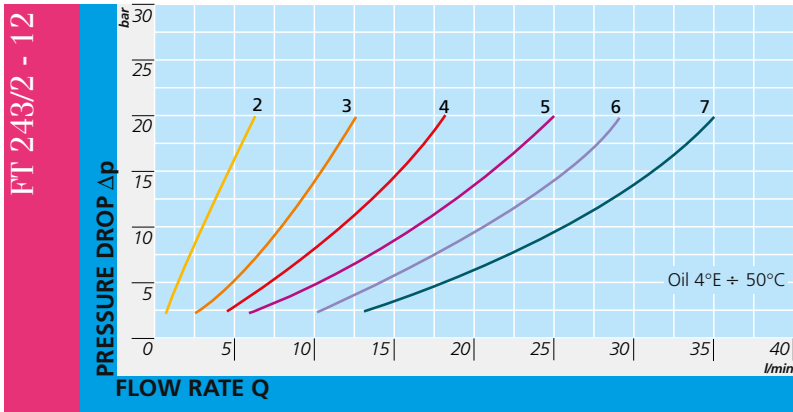
## DIMENSIONS

TYPE	H	$\varnothing L$	M	N	$\varnothing P$	Q	$\varnothing R$	S	$\varnothing T$	U	R.1	$\alpha^\circ$
14	2	M17x1	9	5.5	10	28	4	0.6	4.5	25	0.3	30°
38	2	M18x1	9	5	11	28	5	0.6	6	24.5	0.3	30°
12	2.5	M22x1.5	15	10	14	40.5	8	1	8	36	0.3	20°
34	3.5	M27x1.5	21	15	18	54.5	10	1.5	10	48.5	0.5	20°



FT 243/2





**FT 243/2**



FT 264/2

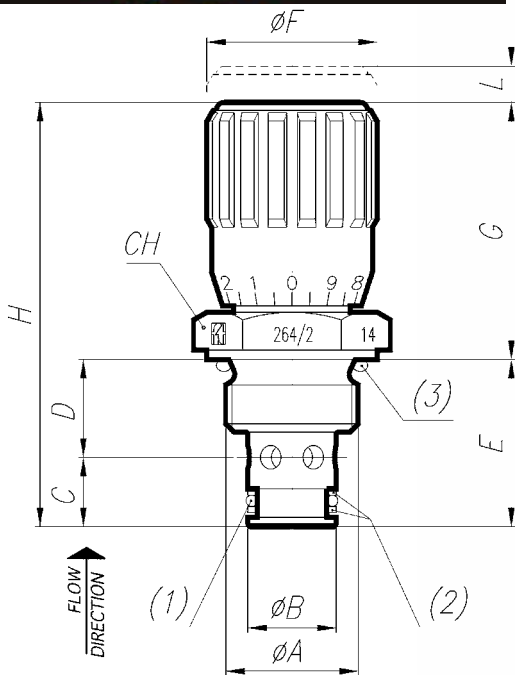


## MATERIALS

BODY	11 S MN PB 30 - UNI EN 10087
NEEDLE	1 C 40 - UNI 8373
OR	NITRILE
ANTIEXTRUSION RING	PTFE
KNOB	GD AL SI 12 - UNI EN AB 46100
KNOB (MP)	ABS

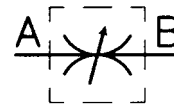
## EXAMPLE FOR ORDERING

	CODE	TYPE	VITON SEAL	PLASTIC KNOB
STEEL	FT 264/2	38	V	MP
STAINLESS STEEL	FT 2264/2	12	-	MP



## DIMENSIONS

TYPE	ØA	ØB	C	D	E	ØF	G	H	L	CH	(3)
18	1/2" GAS	14	12,5	14	26,5	22	36,8	63,3	5,6	27	ORM 0180-25
14	1/2" GAS	14	11	15,5	26,5	27	40,8	67,3	4,9	27	ORM 0180-25
38	1/2" GAS	16	13	17,5	30,5	33	47	77,5	8,3	27	ORM 0180-25
12	3/4" GAS	19	15,5	24,5	40	38	54,6	94,6	9,9	32	ORM 0250-25
34	1" GAS	27	18	26	44	47	64,6	108,6	12	41	ORM 0300-30



## THREADED CARTRIDGE MOUNTED DOUBLE-ACTING CONTROL VALVES BSP

They allow for regulation of flow in both directions.

**On request**

- Version AISI 316 Code FT 2264/2
- Complete with Viton seals (V)
- Knob in ABS (mp)
- Lobes aluminium die-cast handwheel (RA)



FT 264/2

### TECHNICAL DATA

TIPO	TYPE FLOW SECTION CM <sup>2</sup>	MAX. WORKING PRESSURE BAR	MIN. BURSTING PRESSURE BAR	WORKING TEMPERATURE °C	FILTRATION GRADE μM ABSOLUTE
18	0,12	320	1300	-20°/+100°	25
14	0,19	320	1300	-20°/+100°	25
38	0,39	320	1300	-20°/+100°	25
12	0,68	320	1300	-20°/+100°	25
34	1,13	320	1300	-20°/+100°	25

### SEAL KIT ON THE NEEDLE

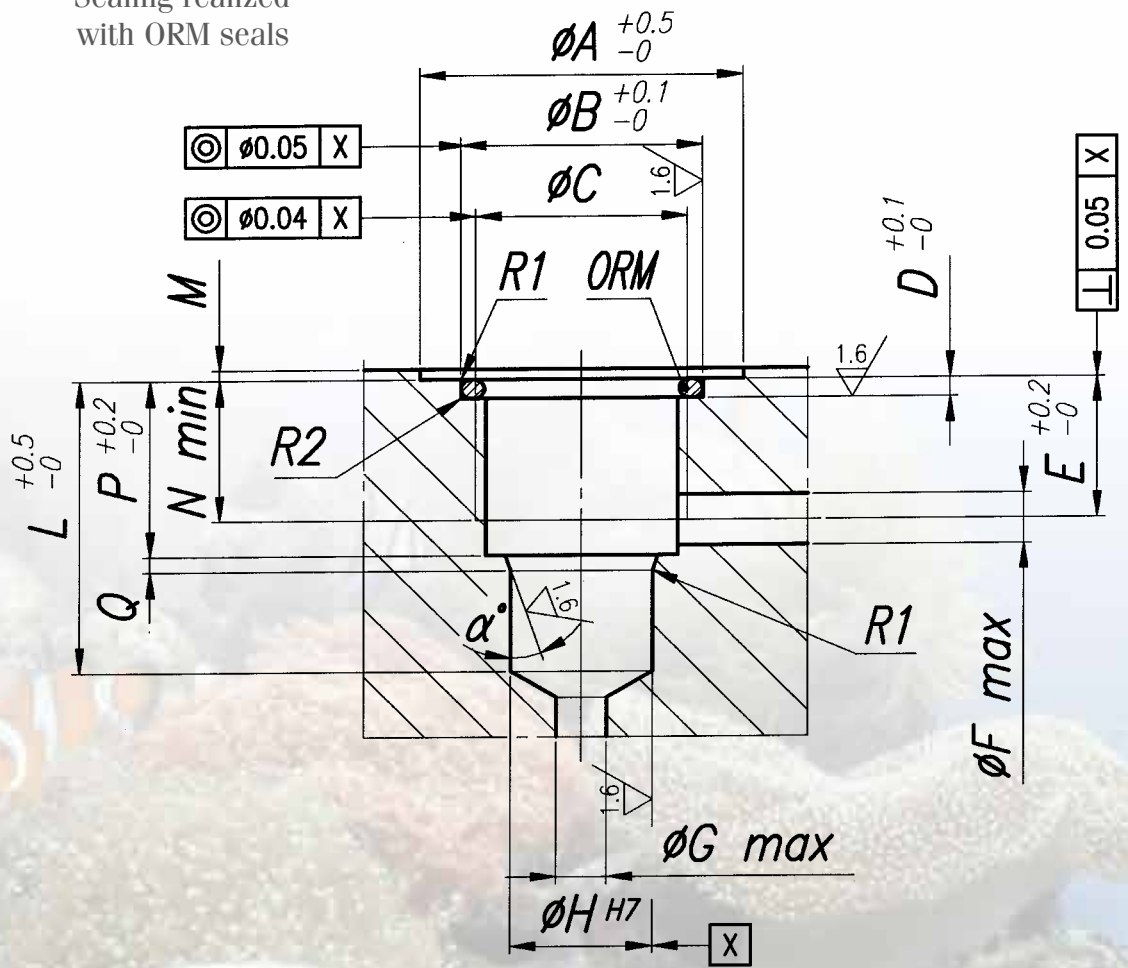
TYPE	OR	BK
18	2018	2018
14	2021	2021
38	108	108
12	2043	2043
34	115	115

### SEAL KIT ON THE SEATING

TYPE	(1) OR	(2) BK
18	2043	BK 14 (FT)
14	2043	BK 14 (FT)
38	2050	BK 38 (FT)
12	2062	BK 12 (FT)
34	130	BK 34 (FT)



Sealing realized  
with ORM seals



# SEATING MACHINING DRAWINGS FOR GAS THREADED VALVES

**F**indynamica  
drive and control products



FT 264/2

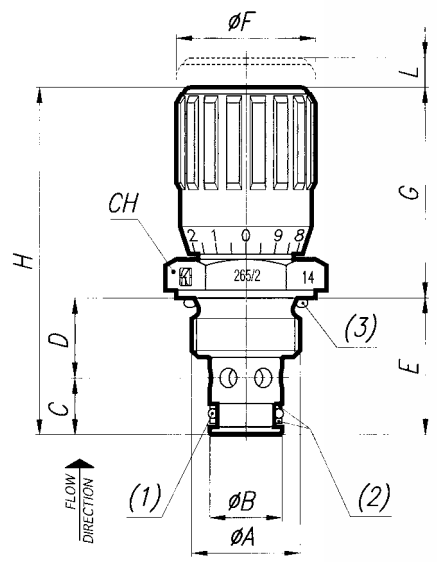


TYPE	ORM	∅A	∅B	∅C	D	E	∅F	∅G	∅H	L	M	N	P	Q	R1	R2	α°
18	0180-25	32	24	1/2" GAS	1,9	14	5	5	14	29	1	14	17,5	1,5	0,1	0,75	70°
14	0180-25	32	24	1/2" GAS	1,9	14	5	5	14	29	1	14	17,5	1,5	0,1	0,75	70°
38	0180-25	32	24	1/2" GAS	1,9	16,5	8	8	16	33	1	14	20,5	1,5	0,1	0,75	70°
12	0250-25	37	30	3/4" GAS	1,9	24	10	10	19	42	1	21	29	1,5	0,1	0,75	70°
34	0300-30	47	36	1" GAS	2,4	24,5	12	12	27	46	1	21	30	1,5	0,1	0,75	70°





FT 265/2 - UNF



## MATERIALS

BODY	11 S MN Pb 30 - UNI EN 10087
NEEDLE	1 C 40 - UNI 8373
OR	NITRILE
ANTIEXTRUSION RINGS	PTFE
KNOB	GD AL SI 12 - UNI EN AB 46100
KNOB (MP)	ABS

## EXAMPLE FOR ORDERING

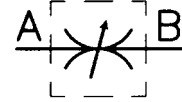
	CODE	TYPE	VITON SEAL	KNOB IN PLASTIC
STEEL	FT 265/2	34	V	MP
STAINLESS STEEL	FT 2265/2	34	-	MP

## SEAL KIT ON THE SEATING

TYPE	1 (OR)	2 (BK)	(3)
34	2037	266/6.022.00.1-34	2068
78	2050	267/2.022.00.1-38	3075

## DIMENSIONS

TYPE	ØA UNI 4534	ØB	C	D	E	ØF	ØF1	G	H	L	CH	WEIGHT KG
34	3/4"-16 UNF	12,7	15,3	12,7	28	27	50	40,7	68,7	6	24	0,112
78	7/8"-14 UNF	15,8	17,5	15	32,5	33	70	46	78,5	8	27	0,115

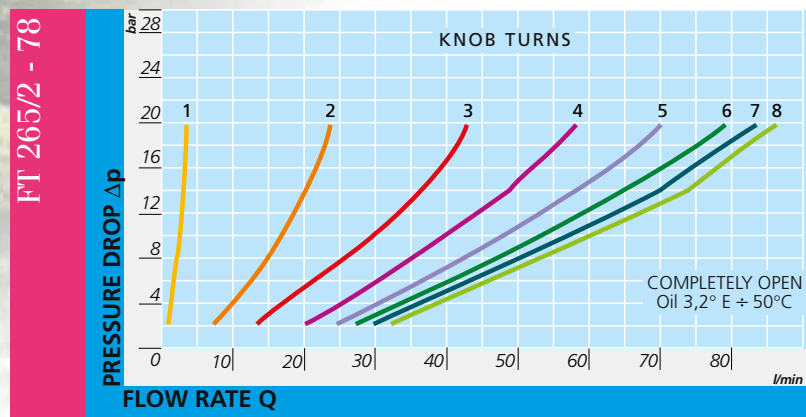
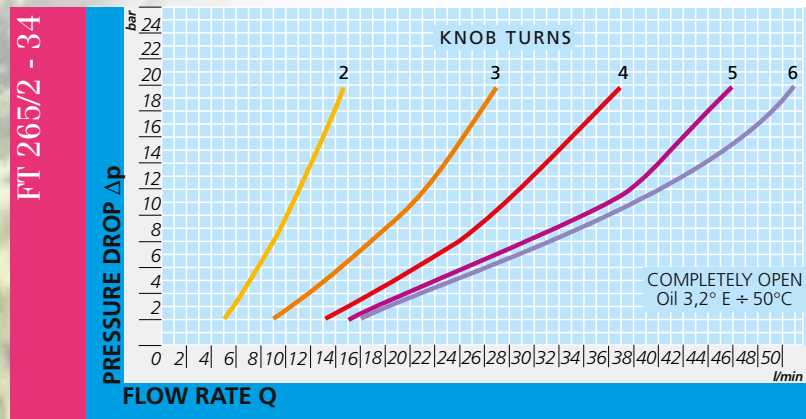


## HIGH FLOW RATE CARTRIDGE MOUNTED DOUBLE-ACTING CONTROL VALVES MAX 350 BAR

They control a flow in both directions.

On request

- Complete with Viton seals (V)
- Knob in ABS (mp)
- Version in AISI 316 code FT 2265/2



FT 265/2-UNF

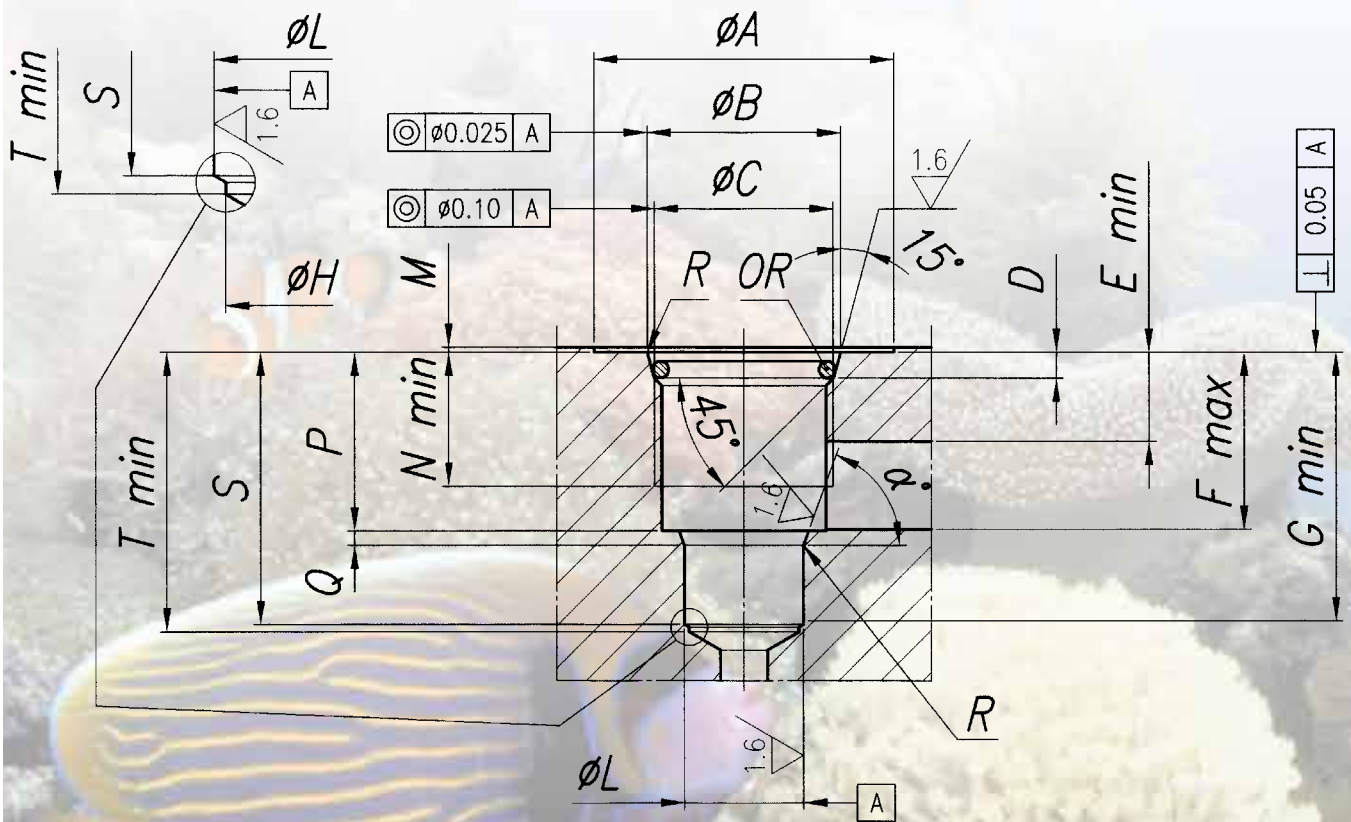
### TECHNICAL DATA

TYPE	FLOW SECTION CM <sup>2</sup>	MAX. WORKING PRESSURE BAR	MIN. BURSTING PRESSURE BAR	WORKING TEMPERATURE °C	FILTRATION GRADE μM ABSOLUTE
34	0,20	320	1 300	-20°/+100°	25
78	0,50	320	1 300	-20°/+100°	25



Sealing realized  
with OR seals  
on conical seating  
for UNF threads

FT 265/2 - FT 266/2 FT 266/5 - FT 266/6 - FT 268/2



# DRAWING OF CAVITY MACHINE FOR CARTRIDGE MOUNTED VALVES



FT 265/2 - 266/2 - 266/5 - 266/6 - 268/2

## CONICAL SEATING FOR OR FT 265/2 - FT 266/2 FT 266/5 - FT266/6 - 268/2

TYPE	ØA	ØB	<sup>C</sup> UNI 4534	D	E	F	G	ØH	ØL
34	32±0,4	20,65±0,1	3/4"-16UNF-2B	2,75	9,5	18,9	28,6	11,7	12,7 <sup>+0,05</sup> <sub>0</sub>
78	32±0,4	24±0,1	7/8"-14UNF-2B	2,75	12,35	24,25	31,85	15	15,875 <sup>+0,05</sup> <sub>0</sub>

## CONICAL SEATING FOR OR FT 265/2 - FT 266/2 FT 266/5 - FT266/6 - 268/2

TYPE	M	N	P	Q	R	S	T	α°	OR
34	0,5	14,3	19,05±0,13	1,53±0,08	0,1 <sup>+0,15</sup> <sub>0</sub>	29±0,4	29,8	70°	2068
78	0,5	15,75	24,45±0,1	1,4±0,1	0,1 <sup>+0,15</sup> <sub>0</sub>	33,75±0,4	34,5	60°	3075



FT 266/2 - UNF



## MATERIALS

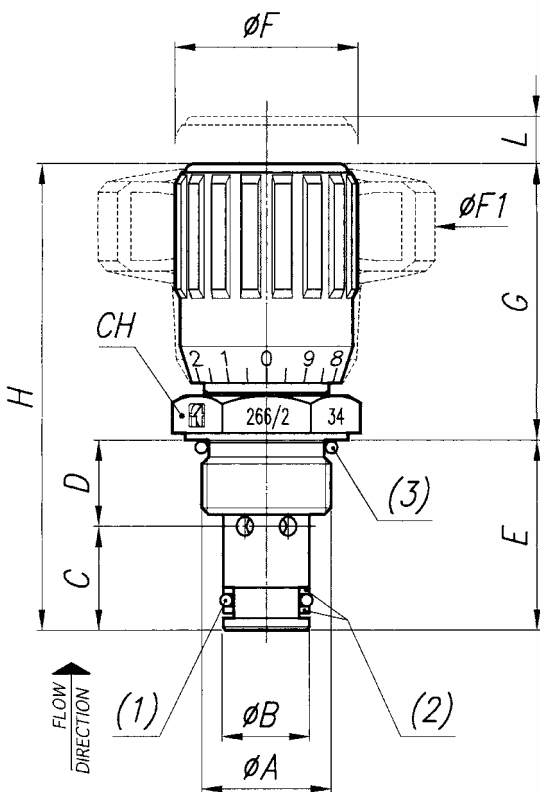
BODY	11 S MN PB 30 - UNI EN 10087
NEEDLE	1 C 40 - UNI 8373
OR	MESCOLA NITRICA
ANTIEXTRUSION RINGS	PTFE
KNOB	GD AL SI 12 - UNI EN AB 46100
KNOB (MP)	ABS

## EXAMPLE FOR ORDERING

	CODE	TYPE	VITON SEAL	KNOB IN PLASTIC
STEEL	FT 266/2	34	V	MP
STAINLESS STEEL	FT 2266/2	34	-	MP

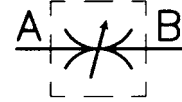
## SEAL KIT ON THE SEATING

TYPE	1 (OR)	2 (BK)	(3)
34	2037	266/6.022.00.1-34	2068
78	2050	267/2.022.00.1-38	3075



## DIMENSIONS

TYPE	ØA UNI 4534	ØB	C	D	E	ØF	ØF1	G	H	L	CH	WEIGHT KG
34	3/4"-16 UNF	12,7	15,3	12,7	28	27	50	40,7	68,7	6	24	0,112
78	7/8"-14 UNF	15,8	17,5	15	32,5	33	70	46	78,5	8	27	0,115



**CARTRIDGE MOUNTED DOUBLE-ACTING CONTROL VALVES MAX 350 BAR**

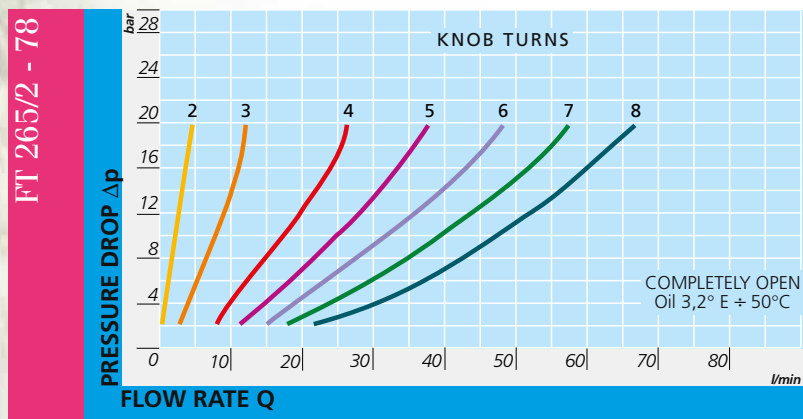
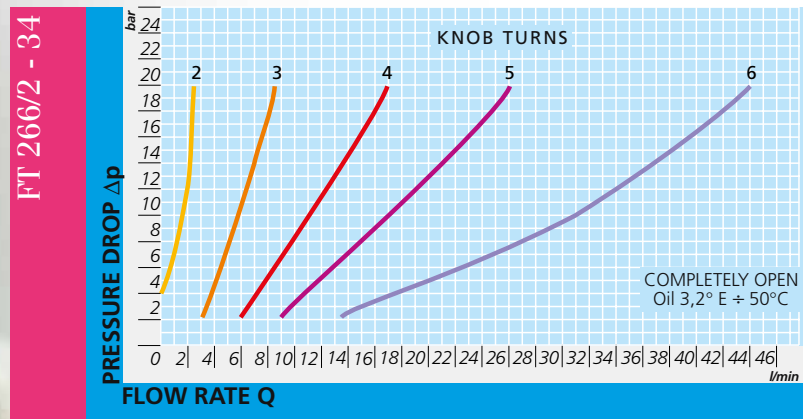
They control a free flow in both directions.

On request

- Complete with Viton seals (V)
- Knob in ABS (mp)
- Version in AISI 316 code FT 2266/2



FT 266/2-UNF



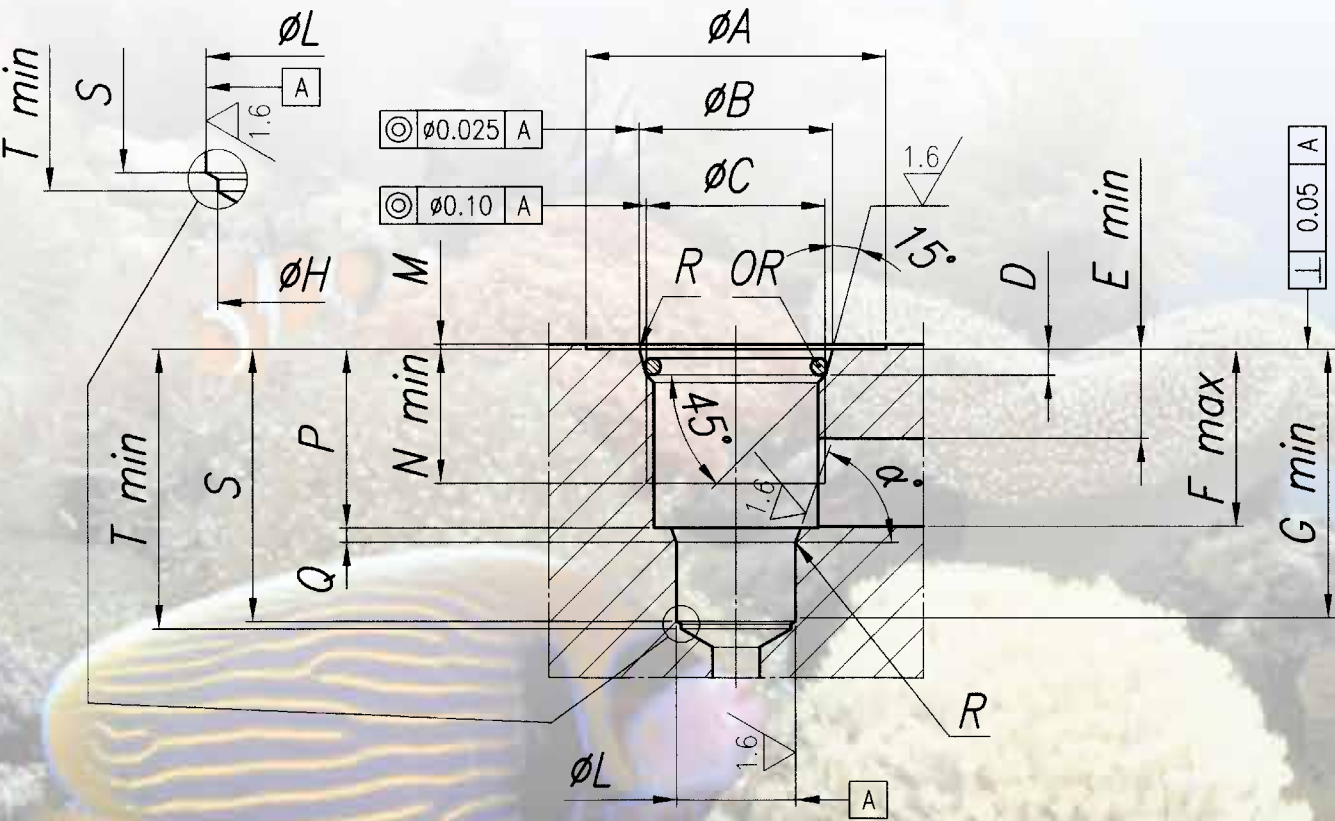
**TECHNICAL DATA**

TYPE	FLOW SECTION CM <sup>2</sup>	MAX. WORKING PRESSURE BAR	MIN. BURSTING PRESSURE BAR	WORKING TEMPERATURE °C	FILTRATION GRADE μM ABSOLUTE
34	0,20	320	1300	-20°/+100°	25
78	0,50	320	1300	-20°/+100°	25



Sealing realized  
with OR seals  
on conical seating  
for UNF threads

FT 265/2 - FT 266/2 FT 266/5 - FT 266/6 - FT 268/2



# DRAWING OF CAVITY MACHINE FOR CARTRIDGE MOUNTED VALVES



FT 265/2 - 266/2 - 266/5 - 266/6 - 268/2



## CONICAL SEATING FOR OR FT 265/2 - FT 266/2 FT 266/5 - FT266/6 - 268/2

TYPE	∅A	∅B	<sup>C</sup> UNI 4534	D	E	F	G	∅H	∅L
34	32±0,4	20,65±0,1	3/4"-16UNF-2B	2,75	9,5	18,9	28,6	11,7	12,7 <sup>+0,05</sup> <sub>0</sub>
78	32±0,4	24±0,1	7/8"-14UNF-2B	2,75	12,35	24,25	31,85	15	15,875 <sup>+0,05</sup> <sub>0</sub>

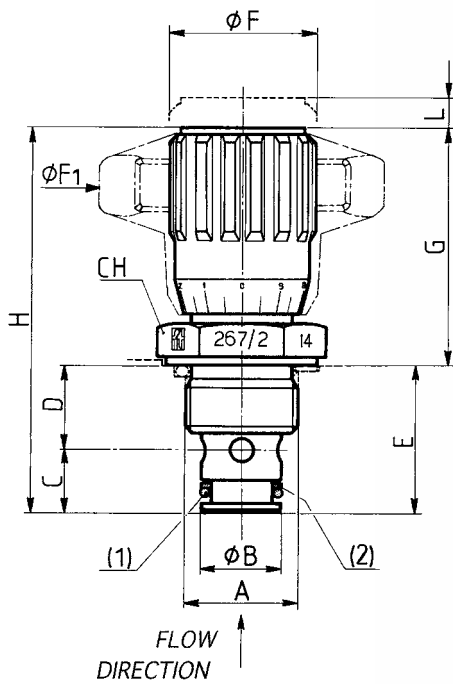
## CONICAL SEATING FOR OR FT 265/2 - FT 266/2 FT 266/5 - FT266/6 - 268/2

TYPE	M	N	P	Q	R	S	T	α°	OR
34	0,5	14,3	19,05±0,13	1,53±0,08	0,1 <sup>+0,15</sup> <sub>0</sub>	29±0,4	29,8	70°	2068
78	0,5	15,75	24,45±0,1	1,4±0,1	0,1 <sup>+0,15</sup> <sub>0</sub>	33,75±0,4	34,5	60°	3075





FT 267/2



## MATERIALS

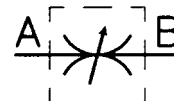
BODY	11 S MN PB 30 - UNI EN 10087
NEEDLE	1 C 40 - UNI 8373
OR	NITRILE
ANTIEXTRUSION RING	PTFE
KNOB	GD AL SI 12 - UNI EN AB 46100
KNOB (MP)	ABS

## EXAMPLE FOR ORDERING

	CODE	TYPE	VITON SEAL	PLASTIC KNOB
STEEL	FT 267/2	38	V	MP
STAINLESS STEEL	FT 2267/2	12	-	MP

## DIMENSIONS

TYPE	A	phi B	C	D	E	phi F	phi F1	G	H	L	CH	WEIGHT KG
18	M15x1	12	9,3	11,2	20,5	22	40	35	55,5	5	22	0,064
14	M20x1,5	14	11	15,5	26,5	27	50	42,5	68,5	7	27	0,125
38	M20x1,5	16	13	17,5	30,5	33	70	48,5	78,5	9	27	0,180
12	M27x2	19	15,5	24,5	40	38	80	56	96	10,5	32	0,305
34	M33x2	27	18	26	44	47	100	63,5	109	13	41	0,580
100	M42x2	35	22	30,5	52,5	58	120	82	134,5	20	50	1,185



## THREADED CARTRIDGE MOUNTED DOUBLE-ACTING CONTROL VALVES

They allow for regulation of flow in both directions.

### On request

- Version AISI 316 Code FT 2267/2
- Complete with Viton seals (V)
- Knob in ABS (mp)
- Lobes aluminium die-cast handwheel (RA)



FT 267/2

### TECHNICAL DATA

TIPO	TYPE FLOW SECTION CM <sup>2</sup>	MAX. WORKING PRESSURE BAR	MIN. BURSTING PRESSURE BAR	WORKING TEMPERATURE °C	FILTRATION GRADE μM ABSOLUTE
18	0,12	320	1300	-20°/+100°	25
14	0,19	320	1300	-20°/+100°	25
38	0,39	320	1300	-20°/+100°	25
12	0,68	320	1300	-20°/+100°	25
34	1,13	320	1300	-20°/+100°	25
100	2,09	320	1300	-20°/+100°	25

### SEAL KIT ON THE NEEDLE

TYPE	OR	BK
18	2018	2018
14	2021	2021
38	108	108
12	2043	2043
34	115	115
100	123	123

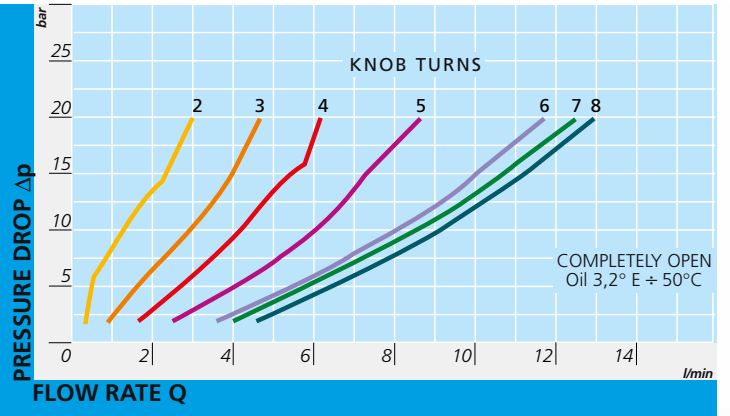
### SEAL KIT ON THE SEATING

TYPE	1 (OR)	2 (BK)
18	108	267/2-022.00.1-18
14	2043	267/2-022.00.1-14
38	2050	267/2-022.00.1-38
12	2062	267/2-022.00.1-12
34	130	267/2-022.00.1-34
100	3118	267/5-022.00.1-34

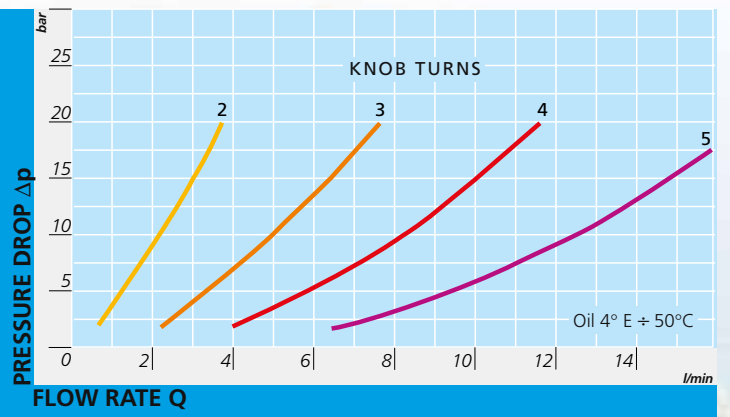


FT 267/2

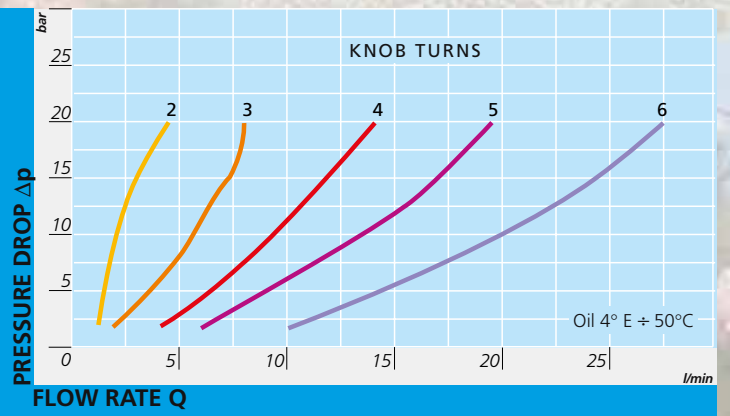
FT 267/2 - 18

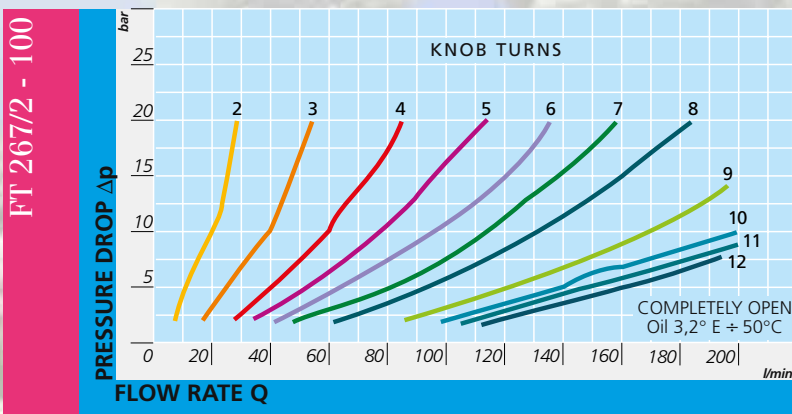
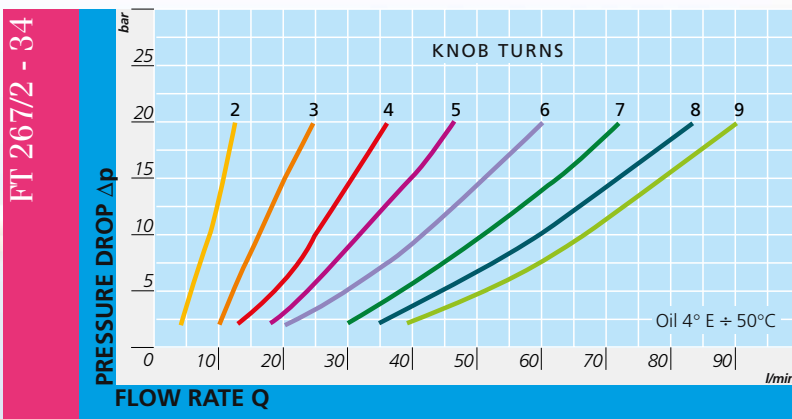
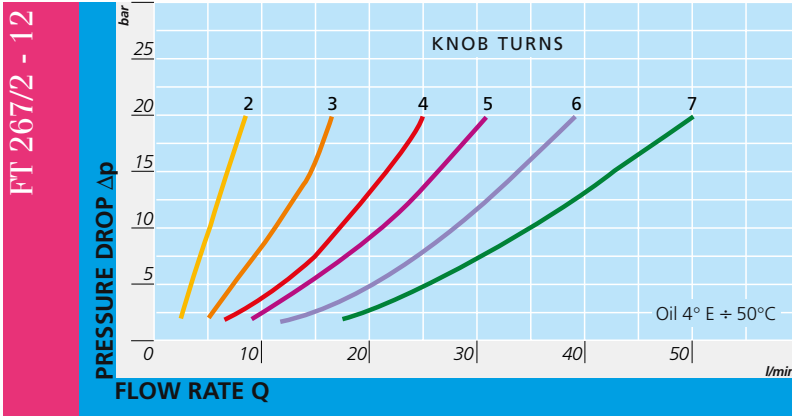


FT 267/2 - 14



FT 267/2 - 38

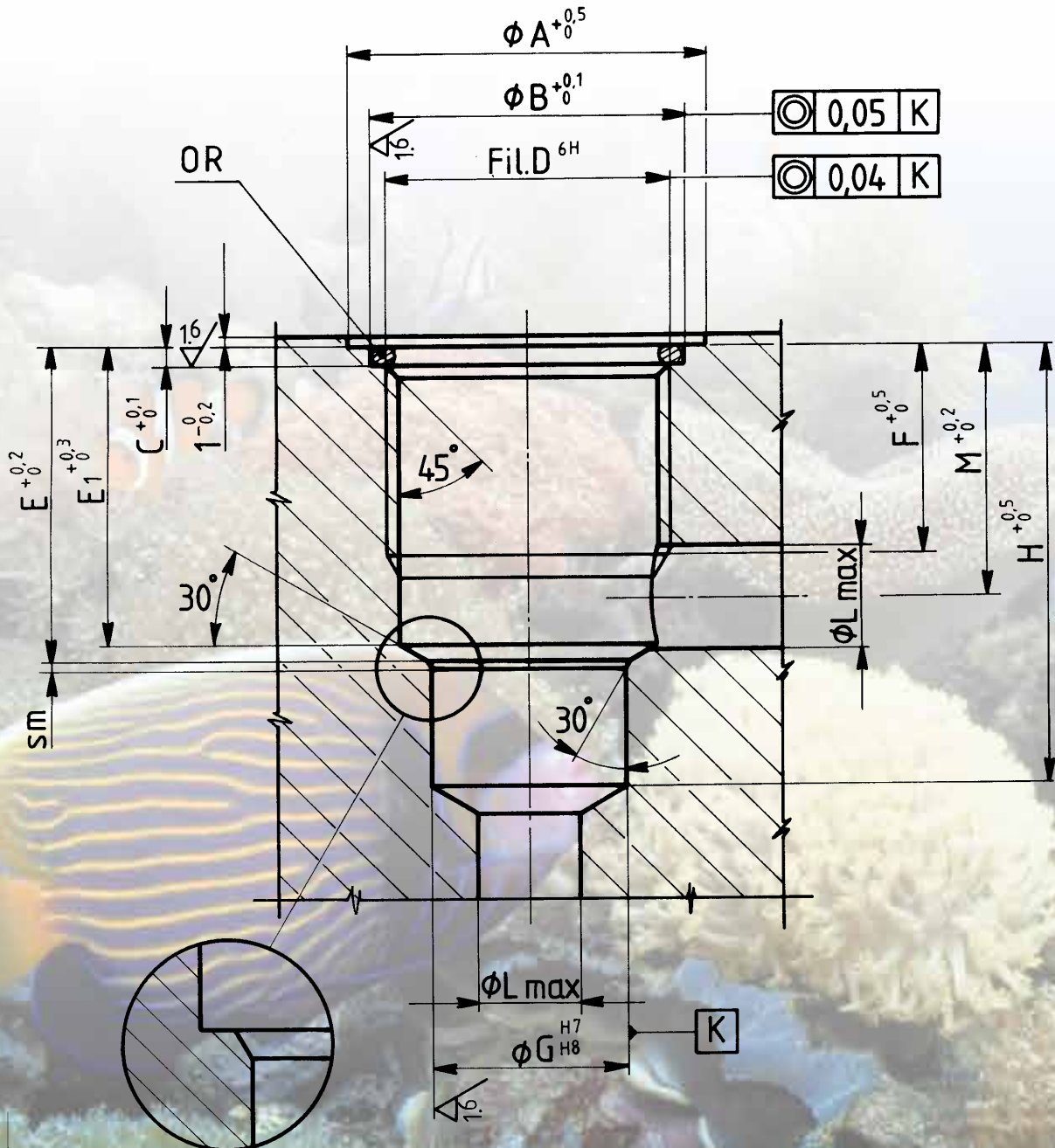




**FT 267/2**



Sealing realized  
with OR seals  
on flat seating



Manufacturing detail  
possible in alternative  
to the conic seat removing  
the quote E1

# SEATING MACHINING DRAWINGS FOR THREADED CARTRIDGE MOUNTED VALVES



FT 247/2 - FT 267/2 - FT 267/5

## FLAT SEATING FOR OR - FT 247/2 - 267/2

TYPE	ØA	ØB	C	D UNI 4534	E	E1	F	ØG	H	ØL	M	SM	OR
18	23	19	2	M15x1	14	13	11	12	21,5	4	11,5	0,5	3056
14	28	24	2	M20x1,5	17,5	16,5	13,5	14	28,5	5	14,5	1	3075
38	28	24	2	M20x1,5	21	20,5	13,5	16	33,5	8	16,2	1,2	3075
12	34	30	2	M27x2	30	28,5	20	19	43	10	24	1,2	3100
34	43	36	2	M33x2	32,5	32	20	27	47,5	13	25	1,2	3125
100	60	45	2	M42x2	38,5	37	23,5	35	57	16	30,5	1,5	3162

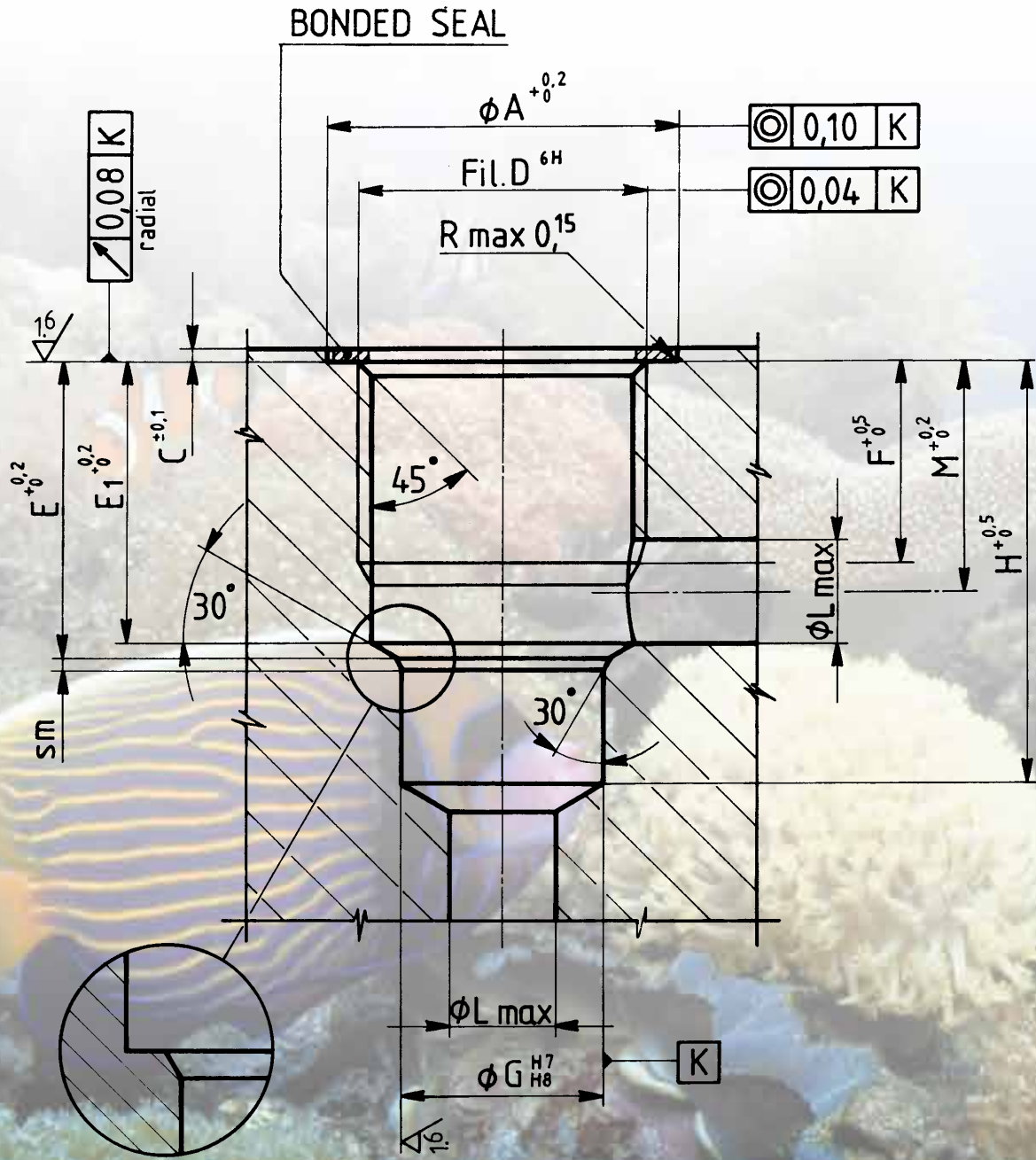
## FLAT SEATING FOR OR - FT 267/5

TYPE	ØA	ØB	C	D UNI 4534	E	E1	F	ØG	H	ØL	M	SM	OR
14	28	24	2	M20x1,5	21	20,5	13,5	16	33,5	8	16,2	1	3075
38	34	30	2	M27x2	30	28,5	20	19	43	10	24	1,2	3100
12	43	36	2	M33x2	32,5	32	20	27	47,5	12	25,5	1,2	3125
34	60	45	2	M42x2	38,5	37	23,5	35	57	16	30,5	1,5	3162
100	61	55	2,2	M52x2	46	45	27	45	67,5	20	34,5	1,5	3200



Sealing realized  
with Bonded seal

FT 247/2 - FT 267/2 - FT 267/5



Manufacturing detail possible in alternative to the conic seat removing the quote E1

# SEATING MACHINING DRAWINGS FOR THREADED CARTRIDGE MOUNTED VALVES



FT 247/2 - FT 267/2 - FT 267/5

## SEATING FOR BONDED SEAL - FT 247/2 - 267/2

TYPE	ØA	C	D UNI 4534	E	E1	F	ØG	H	ØL	M	SM	BONDED SEAL
18	23	1	M15x1	13	12	9	12	20	4	10,3	0,5	400-512
14	27	1	M20x1,5	16,5	15,5	12	14	27	5	13,3	1	400-513
38	27	1	M20x1,5	20	19,5	12	16	32	8	15,2	1,2	400-513
12	33	1,3	M27x2	28	26,5	18	19	41	10	22	1,2	400-520
34	40	1,3	M33x2	30,5	30	18	27	45,5	13	23	1,2	400-515
100	50	1,3	M42x2	36,5	35	21,5	35	55	16	28,5	1,5	400-516

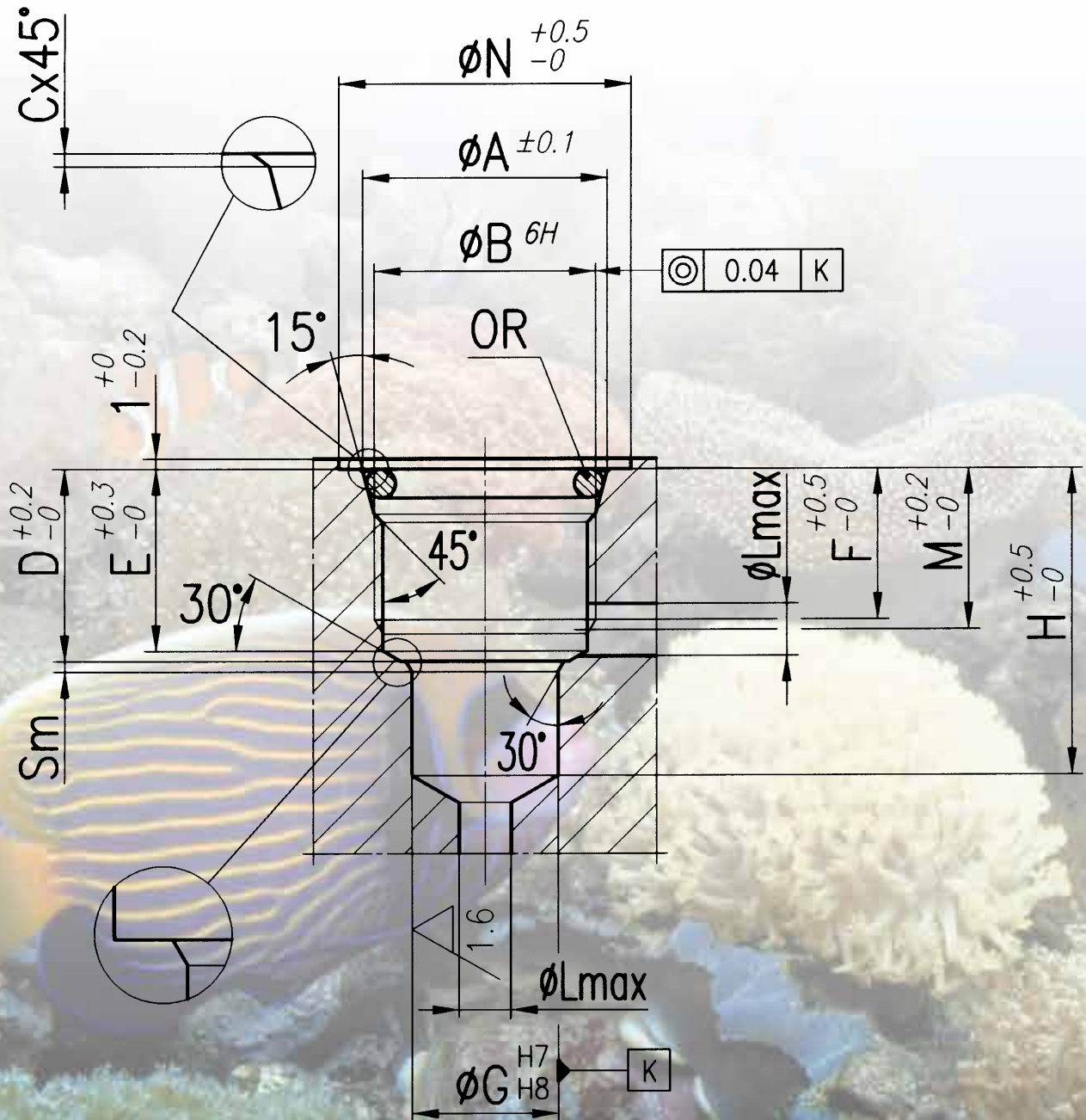
## SEATING FOR BONDED SEAL - FT 267/5

TYPE	ØA	C	D UNI 4534	E	E1	F	ØG	H	ØL	M	SM	BONDED SEAL
14	27	1	M20x1,5	20	19,5	12	16	32	8	15,2	1	400-513
38	33	1,3	M27x2	28	26,5	18	19	41	10	22	1,2	400-520
12	40	1,3	M33x2	30,5	30	18	27	45,5	12	23	1,2	400-515
34	50	1,3	M42x2	36,5	35	21,5	35	55	16	28,5	1,5	400-516





Sealing realized  
with OR seals  
on conical seating



Manufacturing detail possible in alternative to the conic seat removing the quote E

# SEATING MACHINING DRAWINGS FOR THREADED CARTRIDGE MOUNTED VALVES



FT 247/2 - FT 267/2 - FT 267/5

## CONICAL SEATING FOR OR - FT 247/2 - FT 267/2

TYPE	ØA	ØB UNI 4534	C	D	E	F	ØG	H	ØL	M	ØN	SM	OR
18	16,5	M15x1	0,25	14	13	11	12	21,5	4	11,5	23	0,5	2050
14	22,3	M20x1,5	0,25	17,5	16,5	13,5	14	28,5	5	14,5	28	1	3068
38	22,3	M20x1,5	0,25	21	20,5	13,5	16	33,5	8	16,2	28	1,2	3068
12	29,1	M27x2	0,3	30	28,5	20	19	43	10	24	34	1,2	132
34	36	M33x2	0,3	32,5	32	20	27	47,5	13	24	43	1,2	4112
100	45	M42x2	0,3	38,5	37	23,5	35	57	16	29	60	1,5	4150

## CONICAL SEATING FOR OR - FT 267/5

TYPE	ØA	ØB UNI4534	C	D	E	F	ØG	H	ØL	M	ØN	SM	OR
14	22,3	M20x1,5	0,25	21	20,5	13,5	16	33,5	8	16,2	28	1,2	3068
38	29,1	M27x2	0,3	30	28,5	20	19	43	10	24	34	1,2	132
12	36	M33x2	0,3	32,5	32	20	27	47,5	13	25	43	1,2	4112
34	45	M42x2	0,3	38,5	37	23,5	35	57	16	29	60	1,5	4150
100	55	M52x2	0,3	46	45	27	45	67,5	20	34,5	61	1,5	4187

# FT2243/2



## DOUBLE-ACTING BREAKING VALVES

They are composed of a needle throttling which allows a very sensitive control. They can be used for assembling in manifolds and integrated blocks and are also used as cylinder braking valves.

Recommended filtration: 60 micron or inferior.

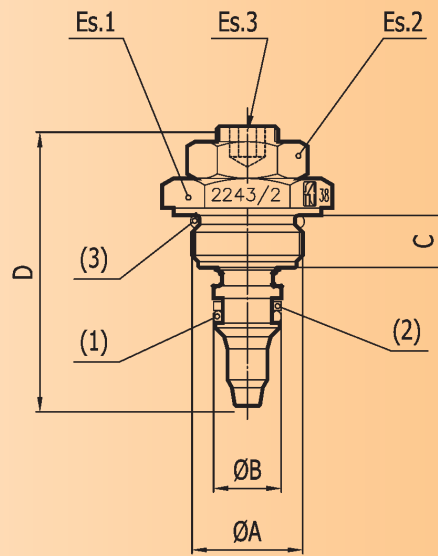
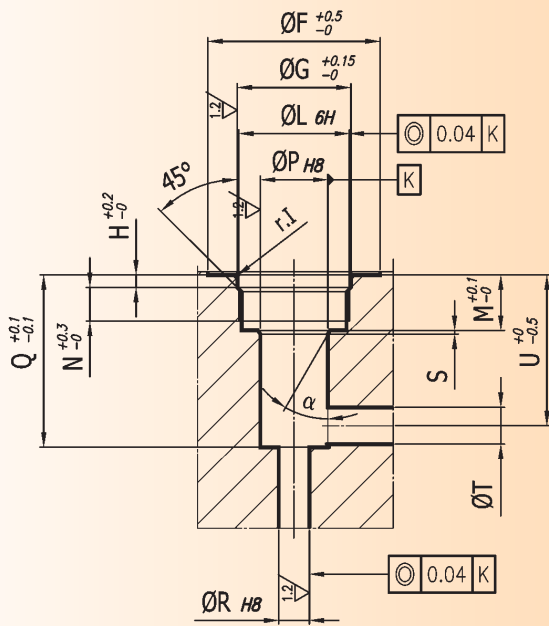
Max. working pressure: 300 bar



## materials

Body	AISI 316 stainless steel
Needle	X 10CrNiS1809 - UNI 6900
OR	Viton
Nut	AISI 316
BK	PTFE

## Seating valve



## dimensions seating valve

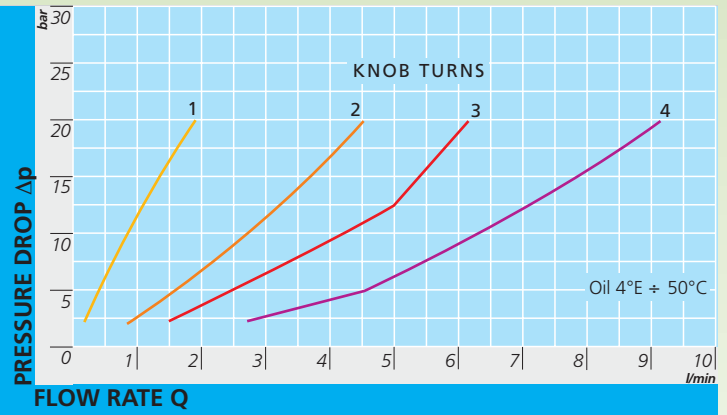
Tipo	H	ØL	M	N	ØP	Q	ØR	S	ØT	U	r.l	α°
14	2	M17x1	9	5.5	10	28	4	0.6	4.5	25	0.3	30°
38	2	M18x1	9	5	11	28	5	0.6	6	24.5	0.3	30°
12	2.5	M22x1.5	15	10	14	40.5	8	1	8	36	0.3	20°
34	3.5	M27x1.5	21	15	18	54.5	10	1.5	10	48.5	0.5	20°

## dimensions valves

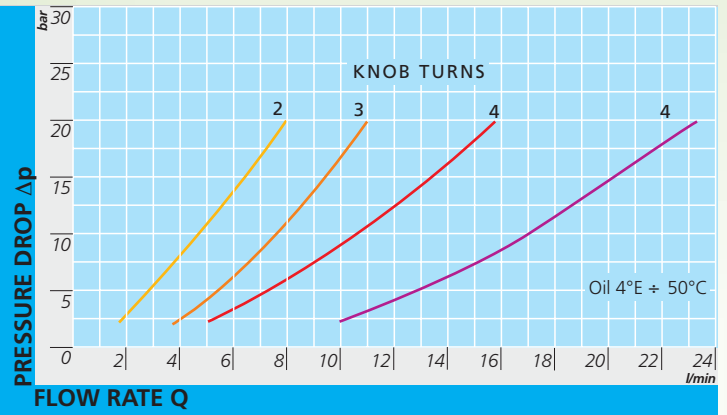
Tipo	ØA	ØB	C	D	Es.1	Es.2	Es.3	(1) OR	(2) BK	(3) OR	ØF	ØG
14	M17x1	10	8.5	44.5	22	17	4	106	106	2056	26	17.5
38	M18x1	11	8.5	45.5	24	17	5	2031	2031	2062	28	18.5
12	M22x1.5	14	13.5	66.5	27	19	7	2043	2043	2075	33	22.5
34	M27x1.5	18	18	82	32	22	9	2056	2056	3093	35	28



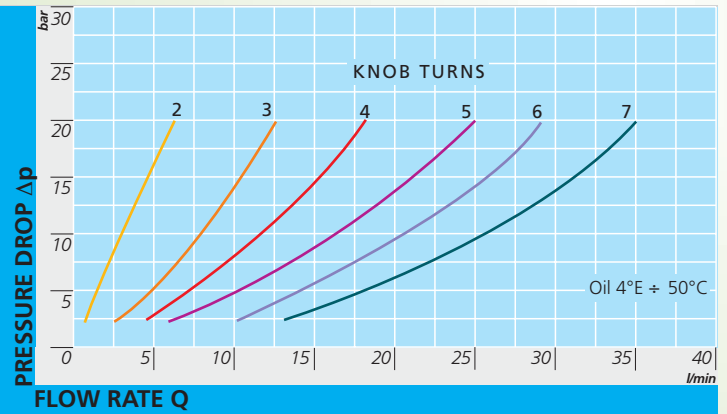
FT 2243/2 - 14



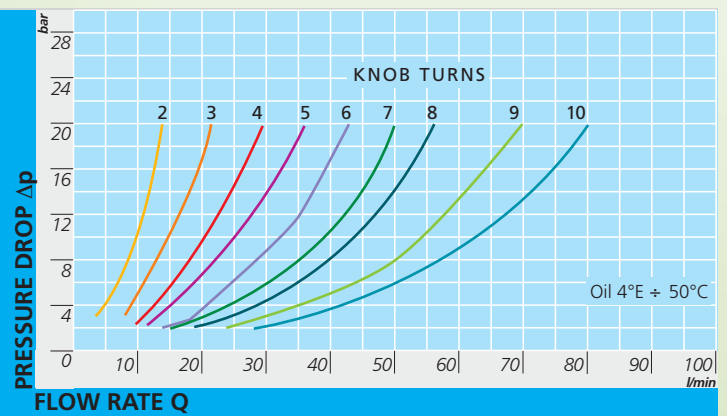
FT 2243/2 - 38



FT 2243/2 - 12



FT 2243/2 - 34





## THREADED CARTRIDGE MOUNTED DOUBLE-ACTING CONTROL VALVES

They allow for regulation of flow in both directions.

**On request**

- Knob in ABS (mp)

### dimensions

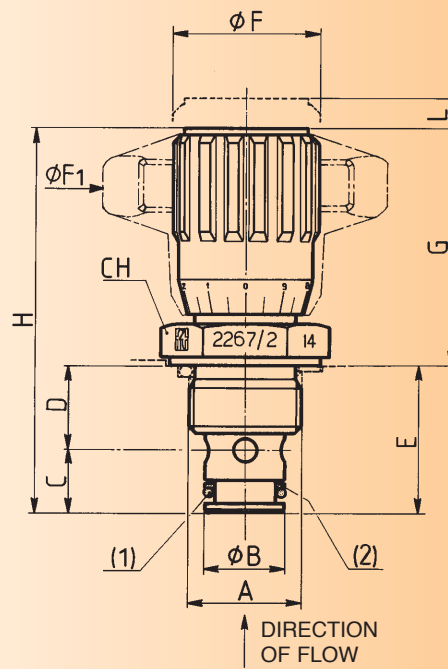
Type	A UNI4534	ØB	C	D	E	ØF	ØF1	G	H	L	CH	Weight kg
18	M15x1	12	9,3	11,2	20,5	22	40	35	55,5	5	22	0,064
14	M20x1,5	14	11	15,5	26,5	27	50	42,5	68,5	7	27	0,125
38	M20x1,5	16	13	17,5	30,5	33	70	48,5	78,5	9	27	0,180
12	M27x2	19	15,5	24,5	40	38	80	56	96	10,5	32	0,305
34	M33x2	27	18	26	44	47	100	63,5	109	13	41	0,580
100	M42x2	35	22	30,5	52,5	58	120	82	134,5	20	50	1,185
112	M52x2	45	31,5	33	64,5	58	120	85	148	25	60	1,6

### materials

Body	AISI 316 stainless steel
Needle	AISI 316 stainless steel
OR	Viton
Antiextrusion ring	PTFE
Handwheel	GD Al Si 12 - UNI 5706
Handwheel (mp)	ABS

### example for ordering

Code	Type	Plastic handwheel
FT 2267/2	12	mp



## technical data

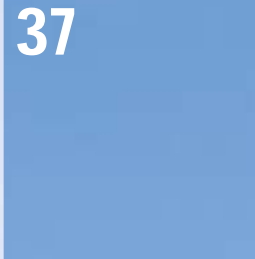
Type	Port section sq. cm	Max. working pressure bar	Min. burst. pressure bar	Working temp. °C	Filtrazion grade $\mu\text{m}$
18	0,12	320	1300	-20° / +130 °C	25
14	0,19	320	1300	-20° / +130 °C	25
38	0,39	320	1300	-20° / +130 °C	25
12	0,68	320	1300	-20° / +130 °C	25
34	1,13	320	1300	-20° / +130 °C	25
100	2,09	320	1300	-20° / +130 °C	25
112	3,14	320	1300	-20° / +130 °C	25

## kit of seals for seat

Tipo	OR	BK
18	2018	2018
14	2021	2021
38	108	108
12	2043	2043
34	115	115
100	123	123
112	128	128

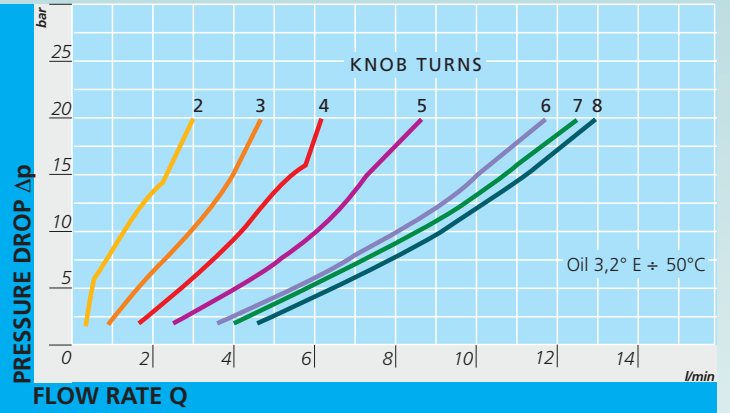
## kit of seals for needle

Tipo	1(OR)	2(BK)
18	108	FT 2267/2-022.00.1-18
14	2043	FT 2267/2-022.00.1-14
38	2050	FT 2267/2-022.00.1-38
12	2062	FT 2267/2-022.00.1-12
34	130	FT 2267/2-022.00.1-34
100	3118	FT 2267/5-022.00.1-34
112	4187	FT 2267/5-022.00.1-100

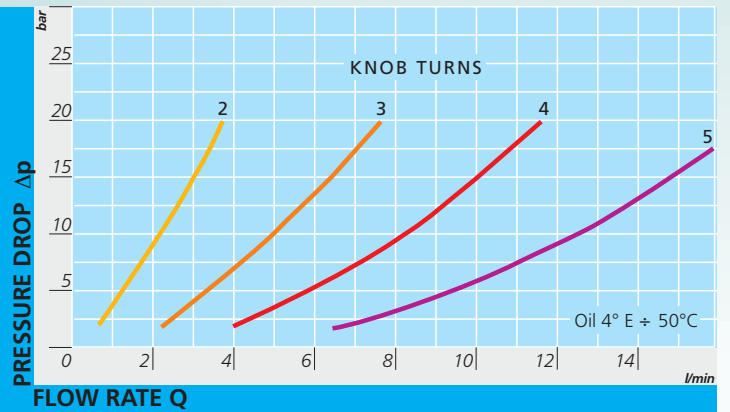




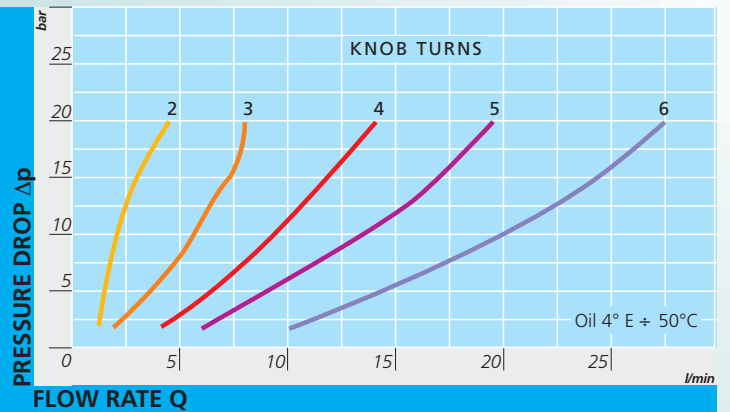
FT 2267/2 - 18



FT 2267/2 - 14

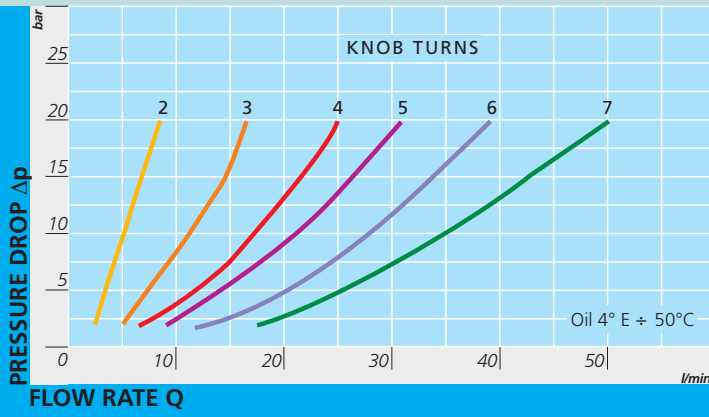


FT 2267/2 - 38

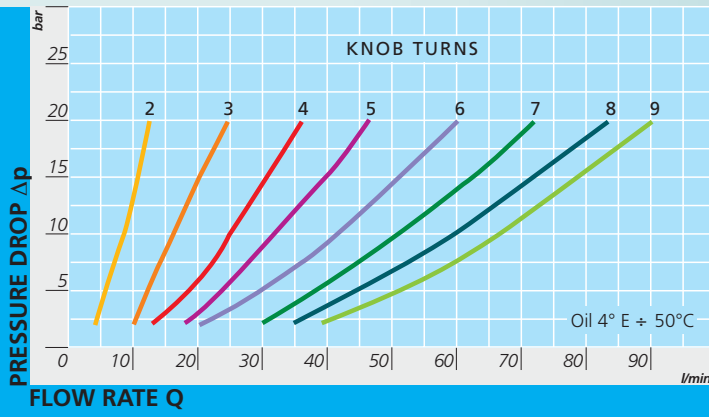




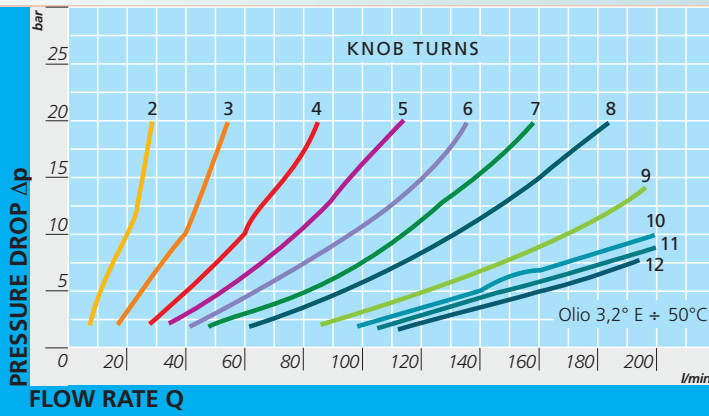
FT 267/2 - 12



FT 2267/2 - 34



FT 2267/2 - 100



FT 2267/2-112

