



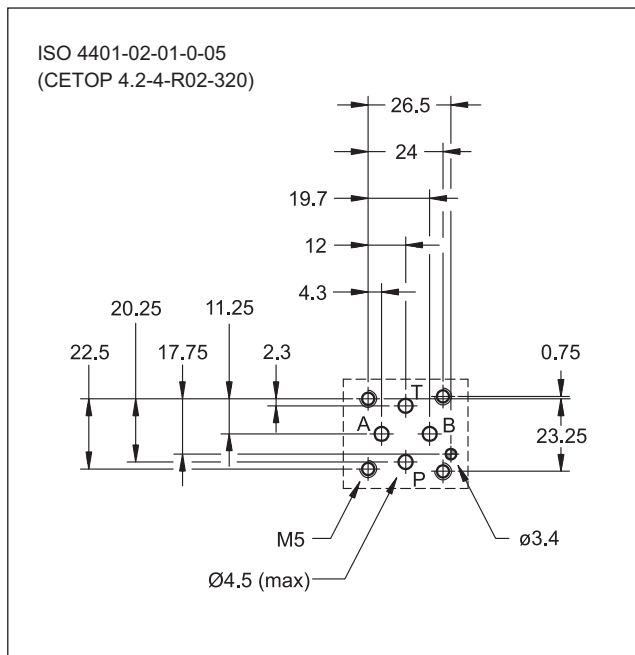
# CHM2

## PILOT OPERATED CHECK VALVE SERIES 10

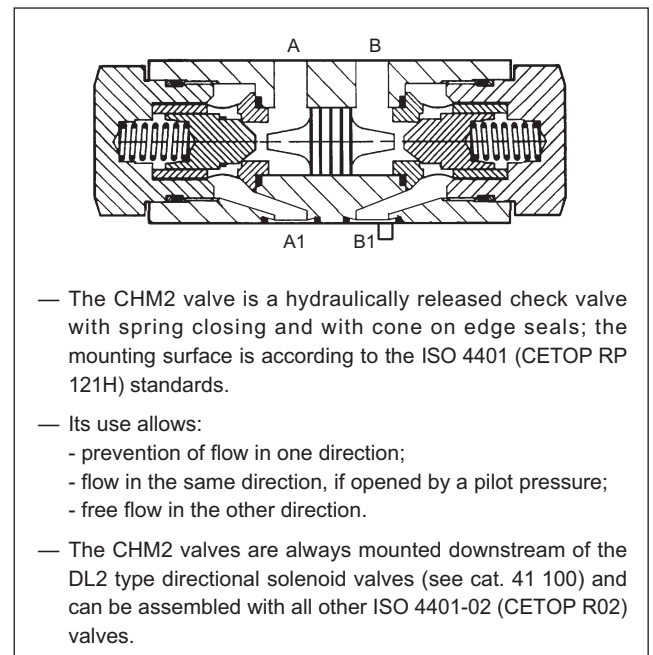
### MODULAR VERSION ISO 4401-02 (CETOP R02)

**p** max 320 bar  
**Q** max 30 l/min

#### MOUNTING SURFACE



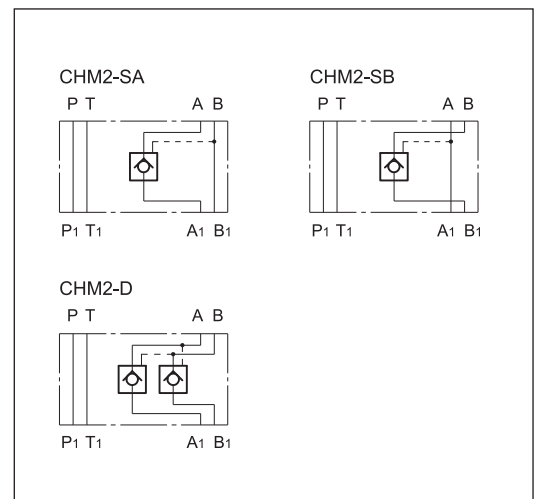
#### OPERATING PRINCIPLE



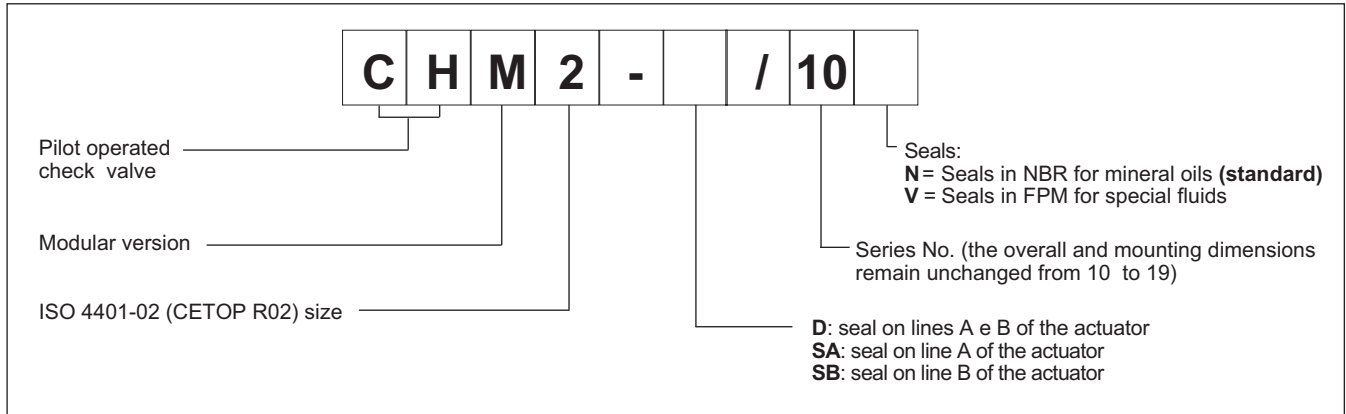
#### PERFORMANCE RATINGS (measured with mineral oil of viscosity 36 cSt at 50°C)

Maximum operating pressure	bar	320
Maximum flow rate	l/min	30
Ratio between pressure of the sealed chamber and the piloting pressure		3.5:1
Opening pressure	bar	2
Ambient temperature range	°C	-20 / +50
Fluid temperature range	°C	-20 / +80
Fluid viscosity range	cSt	10 + 400
Fluid contamination degree	According to ISO 4406:1999 class 20/18/15	
Recommended viscosity	cSt	25
Mass	kg	0.75

#### HYDRAULIC SYMBOLS

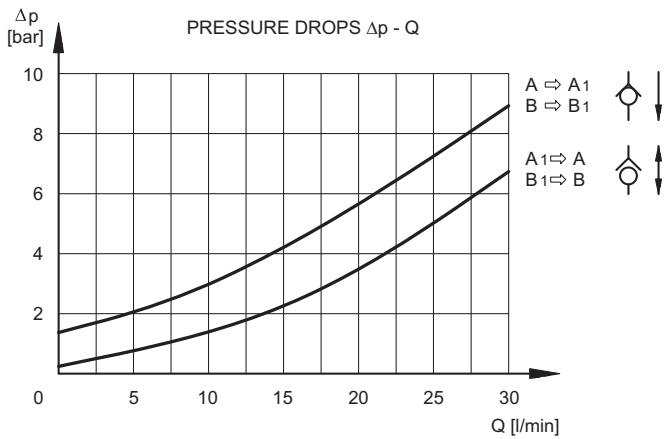


**1 - IDENTIFICATION CODE**



**2 - CHARACTERISTIC CURVES**

(values obtained with viscosity of 36 cSt at 50°C)



**3 - HYDRAULIC FLUIDS**

Use mineral oil-based hydraulic fluids HL or HM type, according to ISO 6743-4. With this kind of fluids, use NBR seals type (code N). With HFDR fluids type (phosphate esters) use FPM seals (code V).

For the use of other fluid types such as HFA, HFB, HFC, please consult our technical department.

Using fluids at temperatures higher than 80 °C causes a faster degradation of the fluid itself and of the seals characteristics.

The fluid must be preserved in its physical and chemical characteristics.

**4 - OVERALL AND MOUNTING DIMENSIONS**

