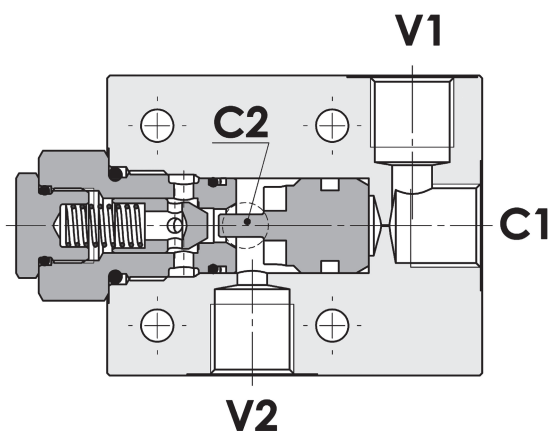
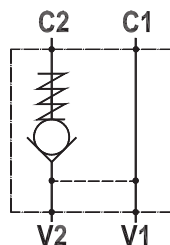




**Gestuurde terugslagkleppen  
flensmontage**

**Valvola di blocco pilotata semplice, montaggio a flangia**  
**Single pilot operated check valve, gasket mounted**

Rev.01-2010/02



**SPECIFICHE TECNICHE**

**Materiali:** corpo in alluminio (a richiesta in acciaio). I componenti interni sono in acciaio trattato termicamente.

**Portata:** fino a 85 l/min

**Pressione max.:** vedi tabella pag.2

**Pressione di apertura:** standard 2,5 bar, a richiesta 5-10 bar

**TECHNICAL SPECIFICATIONS**

**Materials:** body in aluminum (steel on request). Internal components in hardened steel.

**Rated flow:** up to 85 l/min

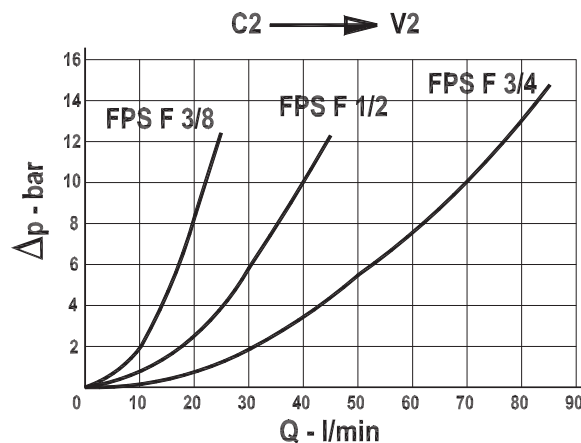
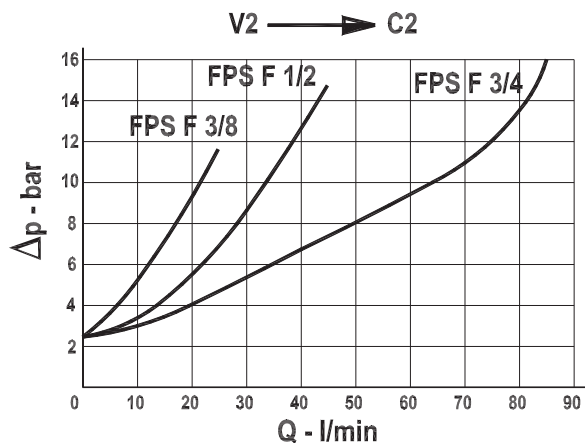
**Max. pressure:** see data sheet page 2

**Cracking pressure:** 2,5 bar standard, 5-10 bar on request

**DIAGRAMMA PERDITE DI CARICO - PRESSURE DROP CURVES**

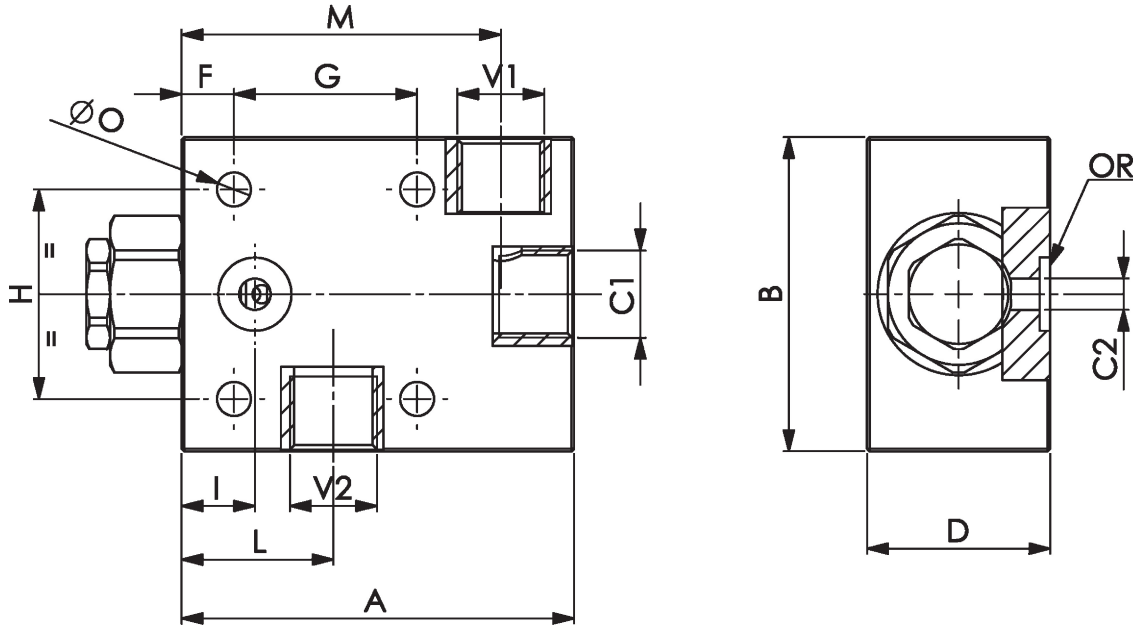
Viscosità olio 24 mm<sup>2</sup>/sec. (3,5 °E)  
 Temperatura 50 °C

Oil viscosity 24 mm<sup>2</sup>/sec. (3,5 °E)  
 Temperature 50 °C



**Valvola di blocco pilotata semplice, montaggio a flangia**  
**Single pilot operated check valve, gasket mounted**

Rev.01-2010/02



| TIPO<br>TYPE | PORTATA<br>MAX. FLOW | PRESS. MAX.<br>MAX. PRESSURE | V1-C1<br>V2 | C2 | A   | B  | D  | F  | G  | H  | I    | L    | M   | N    | O    | RAPP. DI<br>PILOTAGGIO<br>PILOT RATIO | PESO<br>WEIGHT   |
|--------------|----------------------|------------------------------|-------------|----|-----|----|----|----|----|----|------|------|-----|------|------|---------------------------------------|------------------|
|              | L/MIN                | BAR                          | BSPP        | mm | mm  | mm | mm | mm | mm | mm | mm   | mm   | mm  | mm   | mm   |                                       | Kg               |
| FPS F 3/8"   | 30                   | 250 – 350(S)                 | 3/8"        | 6  | 75  | 60 | 34 | 10 | 35 | 40 | 14   | 29   | 61  | 18.5 | 6.5  | 1 : 7                                 | 0.470 – 1.150(S) |
| FPS F 1/2"   | 45                   | 250 – 350(S)                 | 1/2"        | 8  | 95  | 70 | 34 | 15 | 40 | 40 | 22.5 | 38   | 76  | 15   | 8.5  | 1 : 3.5                               | 0.600 – 1.600(S) |
| FPS F 3/4"   | 85                   | 250 – 350(S)                 | 3/4"        | 14 | 135 | 90 | 49 | 15 | 65 | 50 | 30   | 57.5 | 113 | 14   | 10.5 | 1 : 4                                 | 1.700 – 4.100(S) |

Queste valvole, data la loro configurazione, non consentono una elevata contropressione allo scarico

*These valves, owing to their configuration, can't allow for an high discharge pressure*

|                          | FPS F 3/8" | FPS F 1/2" | FPS F 3/4" |
|--------------------------|------------|------------|------------|
| Guarnizione OR – OR seal | 9,19x2,62  | 15,54x2,62 | 18,64x3,53 |

**ESEMPIO DI ORDINAZIONE - ORDERING CODE EXAMPLE**

**F P S F 3 / 8 2 , 5 G \* \***

3/8 – 3/8" BSPP  
 \* 1/2 – 1/2" BSPP  
 3/4 – 3/4" BSPP  
 Connessioni - Port sizes

2.5 bar (std) – 5 bar – 10 bar  
 \* Pressione apertura ritegno, omettere se std  
 Cracking pressure, omit if std

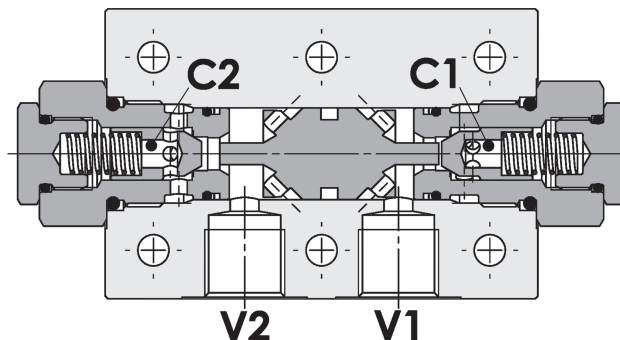
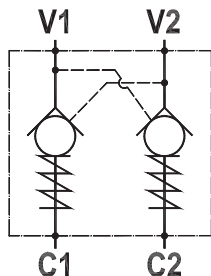
Guarnizioni – Seals:  
 V=Viton \*  
 Omettere se BUNA-N – Omit if BUNA-N

Materiale corpo: omettere se alluminio, S=acciaio \*  
 Body material: omit if aluminum, S=steel

Guarnizione sul pilota, omettere se non richiesta \*  
 With o-ring on pilot valve, omit if not requested

**Valvola di blocco pilotata doppia, montaggio a flangia**  
**Double pilot operated check valve, gasket mounted**

Rev.01-2010/02



**SPECIFICHE TECNICHE**

**Materiali:** corpo in alluminio, a richiesta in acciaio. I componenti interni sono in acciaio trattato termicamente e rettificati.

**Portata max.:** fino a 85 l/min

**Pressione max.:** vedere tabella pag. 02

**Pressione di apertura:** standard 2.5 bar, a richiesta 5-10 bar

**TECHNICAL SPECIFICATIONS**

**Materials:** std body is in aluminium, steel body on request. Internal parts are in hardened and ground steel.

**Rated flow:** up to 85 l/min

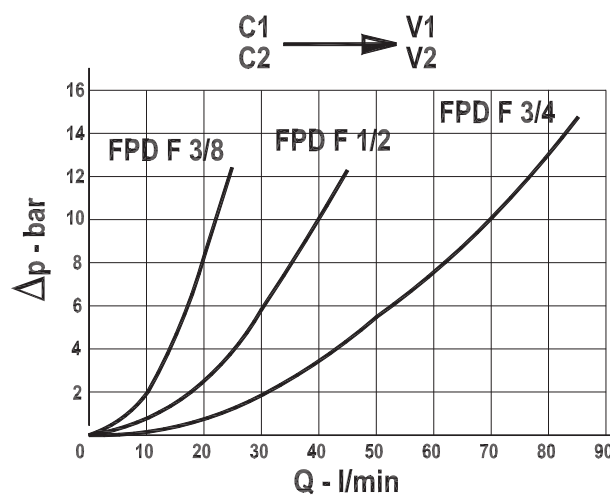
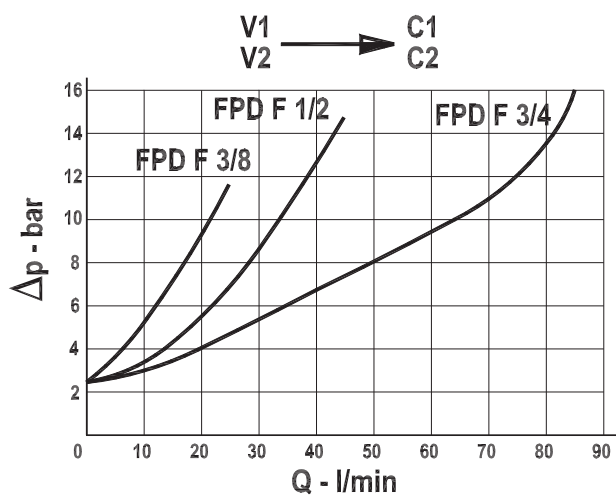
**Max. pressure:** see data sheet page 02

**Cracking pressure:** 2.5 bar standard, 5-10 bar on request

**DIAGRAMMA PERDITE DI CARICO - PRESSURE DROP CURVES**

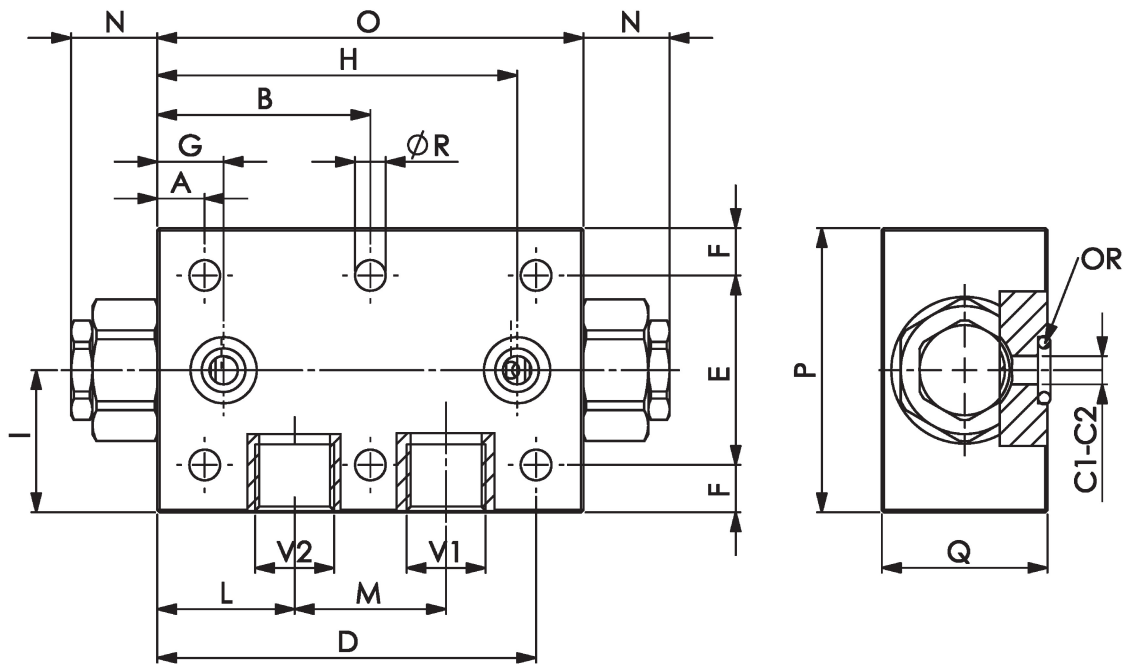
Viscosità olio 24 mm<sup>2</sup>/sec. (3,5 °E)  
 Temperatura 50 °C

Oil viscosity 24 mm<sup>2</sup>/sec. (3,5 °E)  
 Temperature 50 °C



**Valvola di blocco pilotata doppia, montaggio a flangia**  
**Double pilot operated check valve, gasket mounted**

Rev.01-2010/02



| TIPO<br>TYPE | PORTATA<br>MAX.<br>MAX FLOW | PRESS.<br>MAX.<br>MAX PRESSURE | V1<br>V2 | C1<br>C2 | A  | B    | D   | E  | F  | G    | H    | I  | L    | M  | N    | O   | P  | Q    | R    | RAPP. DI<br>PILOTAGGIO<br>PILOT RATIO | PESO<br>WEIGHT   |
|--------------|-----------------------------|--------------------------------|----------|----------|----|------|-----|----|----|------|------|----|------|----|------|-----|----|------|------|---------------------------------------|------------------|
|              | LMIN                        | BAR                            | BSPP     | mm       | mm | mm   | mm  | mm | mm | mm   | mm   | mm | mm   | mm | mm   | mm  | mm | mm   | mm   |                                       | Kg               |
| FPD F 3/8    | 30                          | 250 – 350(S)                   | 3/8"     | 6        | 10 | 45   | 80  | 40 | 10 | 14   | 76   | 30 | 29   | 32 | 18.5 | 90  | 60 | 34.5 | 6.5  | 1 : 7<br>1 : 4(B)                     | 0.650 – 1.400(S) |
| FPD F 1/2    | 45                          | 250 – 350(S)                   | 1/2"     | 8        | 15 | 55   | 95  | 40 | 15 | 22.5 | 87.5 | 35 | 38   | 34 | 14.5 | 110 | 70 | 34.5 | 8.5  | 1 : 3.5                               | 0.750 – 1.800(S) |
| FPD F 3/4    | 85                          | 250 – 350(S)                   | 3/4"     | 14       | 15 | 82.5 | 150 | 50 | 20 | 30   | 135  | 45 | 57.5 | 50 | 14   | 165 | 90 | 49.5 | 10.5 | 1 : 4                                 | 2.300 – 5.200(S) |

Queste valvole, data la loro configurazione, non consentono una elevata contropressione allo scarico

*These valves, owing to their configuration, can't allow for an high discharge pressure*

|                          | FPD F 3/8" | FPD F 1/2" | FPD F 3/4" |
|--------------------------|------------|------------|------------|
| Guarnizione OR – OR seal | 9,19x2,62  | 15,54x2,62 | 18,64x3,53 |

**ESEMPIO DI ORDINAZIONE - ORDERING CODE EXAMPLE**

**F P D F 1 / 2 2 , 5 G B \* \***

3/8 – 3/8" BSPP  
 \* 1/2 – 1/2" BSPP  
 3/4 – 3/4" BSPP  
 Connessioni - Port sizes

2.5 bar (std) – 5 bar – 10 bar  
 \* Pressione apertura ritengo, omettere se std  
 Cracking pressure, omit if std

\* Guarnizione sul pilota. omettere se non richiesta  
 With o-ring on pilot valve, omit if not requested

Guarnizioni – Seals:  
 V=Viton \*  
 Omettere se BUNA-N – Omit if BUNA-N

Mat. corpo: omettere se alluminio, S=acciaio \*  
 Body material: omit if aluminium, S=steel

B - solo per FPD F 3/8 R.PIL: 1:4  
 B - only for FPD F 3/8 R.PIL: 1:4 \*  
 Omettere se std - omit if std