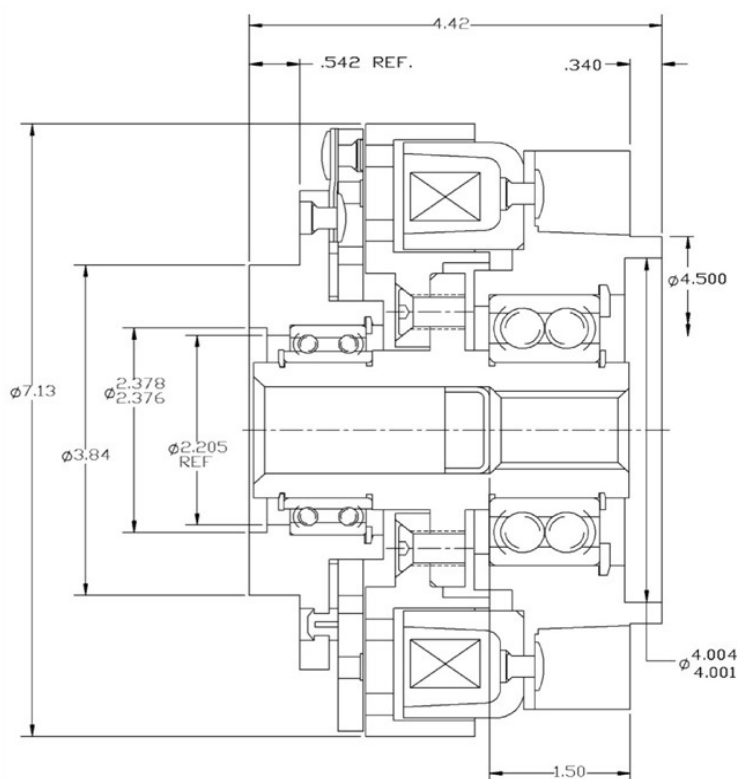


H28D200 CLUTCH Hydraulic Pump Drive 12 or 24 Volt D.C. - Shaft Driven

Power
72 Watts

Max RPM
3600

Weight
30 Lbs.



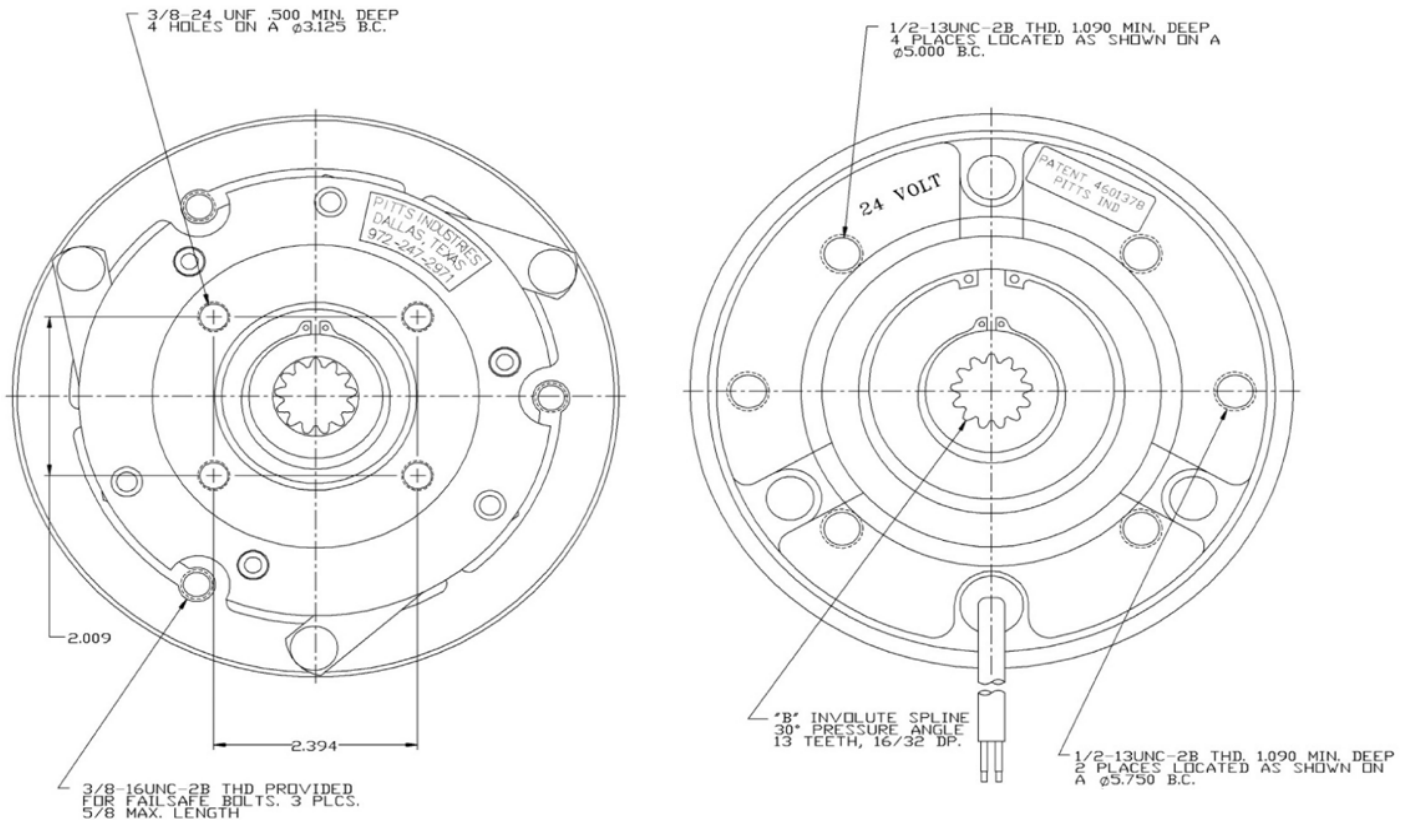
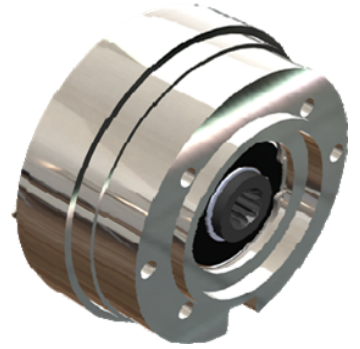
US Patent No. 4601378

Static Rated Torque - 200 Lbs. Ft.

Inertia: Rotor Assy..... .39 Lb. Ft.²
 Armature Assy..... .18 Lb. Ft.²

24 Volt - 3 Amp Part No.	12 Volt - 6 Amp Part No	For Pump Shaft Size	For Pump Mount Style	Pitts Mount Bracket
13814	13394	"B" Spline 13T 16/32 DP	"B" 2 or 4 Bolt	13219
N/A	13395	7/8" - With 1/4" Keyway		
N/A	13396	1" - With 1/4" Keyway		

8D2 Mounting Dimensions



Note:

- Drive flange bolt pattern and pilot diameter on clutch are dimensioned to correlate with "Spicer" type 1280 – 1310 series drive shaft flange connections.
- Proper drive shaft selection is important. Consult with drive shaft manufacturers specifications for each specific application requirements.
- Drive shaft alignment must be within 3°.