

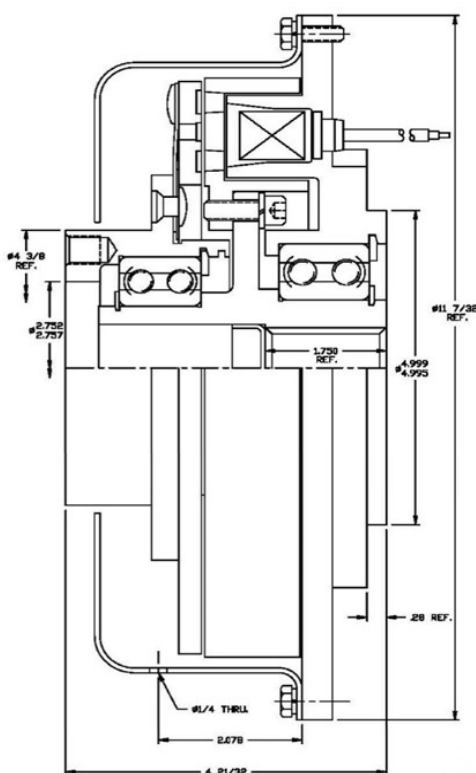


## **H36D400 CLUTCH** Hydraulic Pump Drive 12 or 24 Volt D.C. - Shaft Driven

**Power**  
91 Watts

**Max RPM**  
3600

**Weight**  
44 Lbs.



US Patent No. 4601378

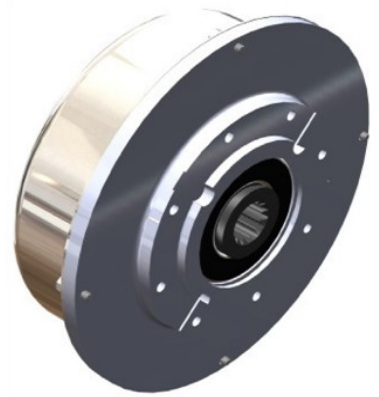
**Static Rated Torque - 400 Lbs. Ft.**

**Inertia:** Rotor Assy..... .79 Lb. Ft.<sup>2</sup>  
 Armature Assy..... .48 Lb. Ft.<sup>2</sup>

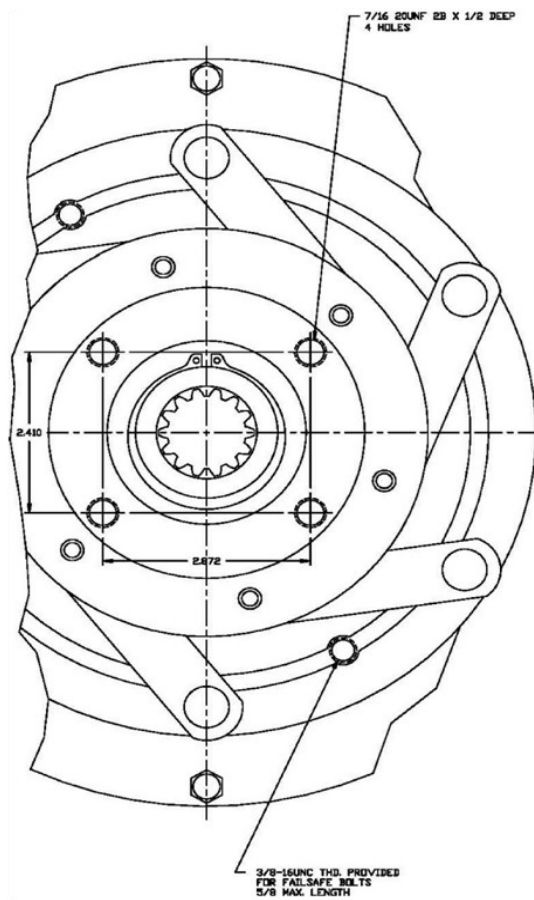
24 Volt - 4 Amp Part No.	12 Volt - 8 Amp Part No	For Pump Shaft Size	For Pump Mount Style	Pitts Mount Bracket
13856	13378	"C" Splined 1-1/4" 14T 12/24 DP	"C" 2-4	13256
13798	13538	"C" - 1-1/4" With 5/16" Keyway		
13859	13589	"B" Splined 7/8" 13T 16/32 DP	"B" 2-4	13258

## H36D400 CLUTCH

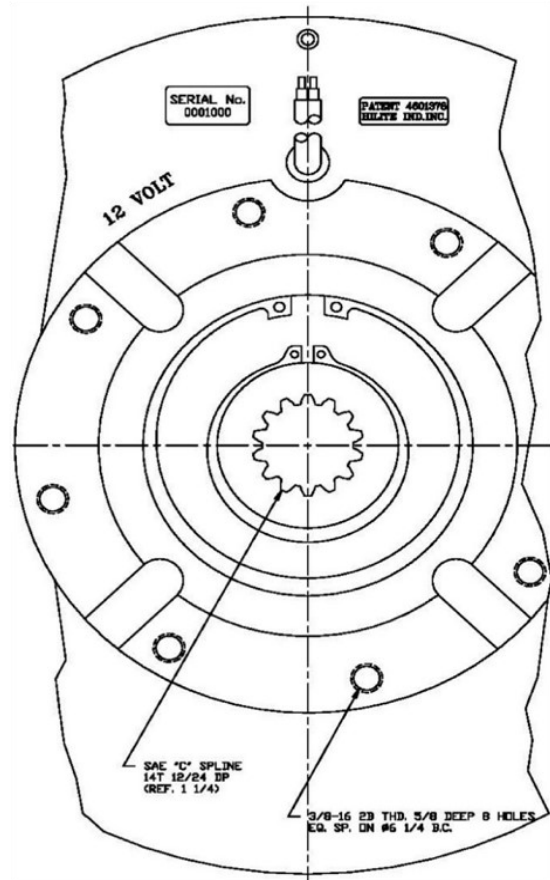
### Mounting Dimensions



Front View



Rear View



US Patent No. 4601378

**Note:**

- Drive flange bolt pattern and pilot diameter on clutch are dimensioned to correlate with "Spicer" type 1350 – 1410 series drive shaft flange connections.
- Proper drive shaft selection is important. Consult with drive shaft manufacturers specifications for each specific application requirements.
- Drive shaft alignment must be within 3°.