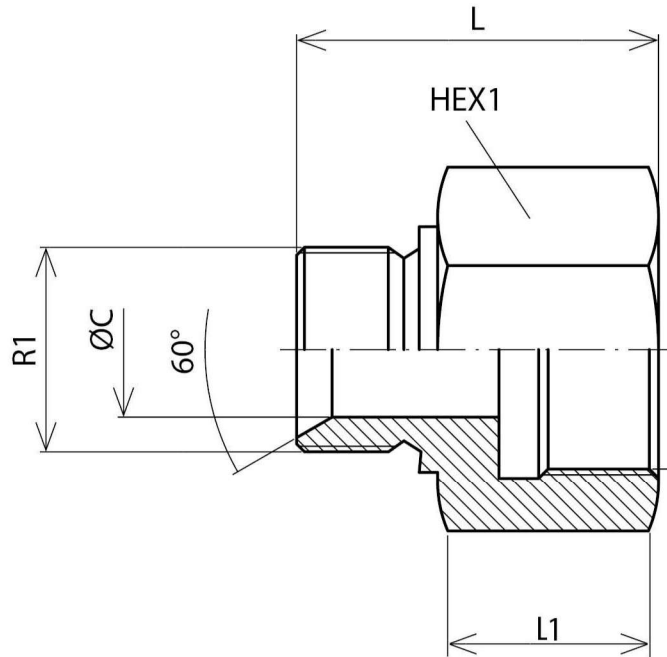


Reducer adaptor male BSP 60° - fixed female BSP

Stainless Steel AISI 316-L



Part nº	R1	R2	L	L1	HEX 1	ØC
Z10600204	M 1/8" BSP	F 1/4" BSP	30	21	19	3,5
Z10600206	M 1/8" BSP	F 3/8" BSP	33	22	22	4
Z10600402	M 1/4" BSP	F 1/8" BSP	28,5	15,2	19	5
Z10600406	M 1/4" BSP	F 3/8" BSP	35	22	24	5
Z10600408	M 1/4" BSP	F 1/2" BSP	38	25	27	4,7
Z10600604	M 3/8" BSP	F 1/4" BSP	36	22	22	7,9
Z10600608	M 3/8" BSP	F 1/2" BSP	39	25	27	7,9
Z10600804	M 1/2" BSP	F 1/4" BSP	37	22	27	11,5
Z10600806	M 1/2" BSP	F 3/8" BSP	39,5	28	27	11
Z10600812	M 1/2" BSP	F 3/4" BSP	45,5	28	32	11
Z10601206	M 3/4" BSP	F 3/8" BSP	40	22	32	15,4
Z10601208	M 3/4" BSP	F 1/2" BSP	40	22	32	16
Z10601216	M 3/4" BSP	F 1" BSP	46,5	28,5	41	16
Z10601612	M 1" BSP	F 3/4" BSP	50,5	28,5	41	22
Z10601620	M 1" BSP	F 1"1/4 BSP	58	36	55	22,2
Z10602016	M 1"1/4 BSP	F 1" BSP	53,5	28	50	30
Z10602420	M 1"1/2 BSP	F 1"1/4 BSP	60,5	36	55	33,3
Z10602432	M 1"1/2 BSP	F 2" BSP	65	40	70	33
Z10603224	M 2" BSP	F 1"1/2 BSP	68	40	70	46