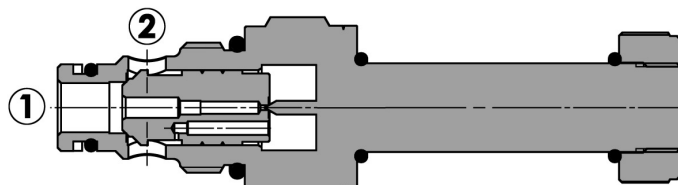
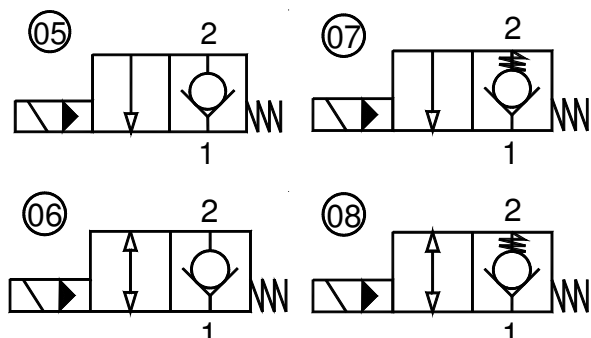


**Valvola elettrica 2 vie, pilotata, normalmente chiusa**  
**2 way, pilot operated electric valve, normally closed**

Rev.02-2016/08



**SPECIFICHE TECNICHE**

**Materiali:** cartuccia in acciaio zincato. Componenti interni in acciaio trattato termicamente.

**Campo di portata:**

S08: 0.5-50 L/min; S10: 2-70 L/min; S12: 4-140 L/min; S16: 4-150 L/min

**Pressione max.:** 350 bar

**Coppia di serraggio in cavità:** vedere pag.2

**Cavità:** vedere sezione X

**Peso cartuccia:** vedere pagina 2

**Bobine:** versione C-13, vedere sezione Y

**Temperatura olio:** -20°C + 80°C

**Temperatura ambiente:** -30°C + 60°C

**Filtrazione consigliata:** nominale max. 10µ, ISO 4406-19/17/14 (NAS8) o minore

La variazione di voltaggio in ingresso non deve eccedere il ±10% del valore nominale.

**TECHNICAL SPECIFICATIONS**

**Materials:** cartridge in steel zinc plated, internal parts in hardened steel.

**Flow range:**

S08: 0.5-50 L/min; S10: 2-70 L/min; S12: 4-140 L/min; S16: 4-150 L/min

**Max. pressure:** 350 bar

**Installation torque:** see page 2

**Cavity:** see section X

**Cartridge weight:** see page 2

**Coils:** version C-13, see section Y

**Oil temperature:** -20°C + 80°C

**Ambient temperature range:** -30°C + 60°C

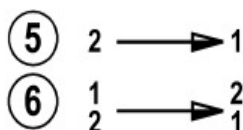
**Recommended filtration:** nominal max. 10µ, ISO 4406-19/17/14 (NAS8) or less.

Inlet voltage fluctuations must not exceed ±10% of nominal voltage.

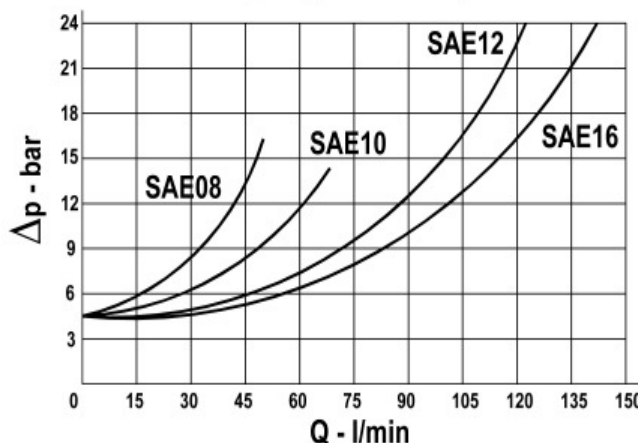
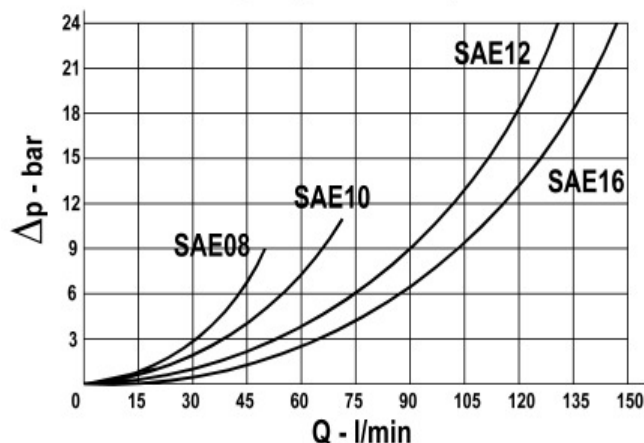
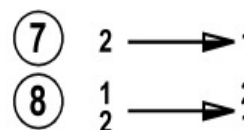
**DIAGRAMMA PERDITE DI CARICO - PRESSURE DROP CURVES**

Viscosità olio 24 mm<sup>2</sup>/sec. (3,5 °E)  
 Temperatura 50 °C

Oil viscosity 24 mm<sup>2</sup>/sec. (3,5 °E)  
 Temperature 50 °C

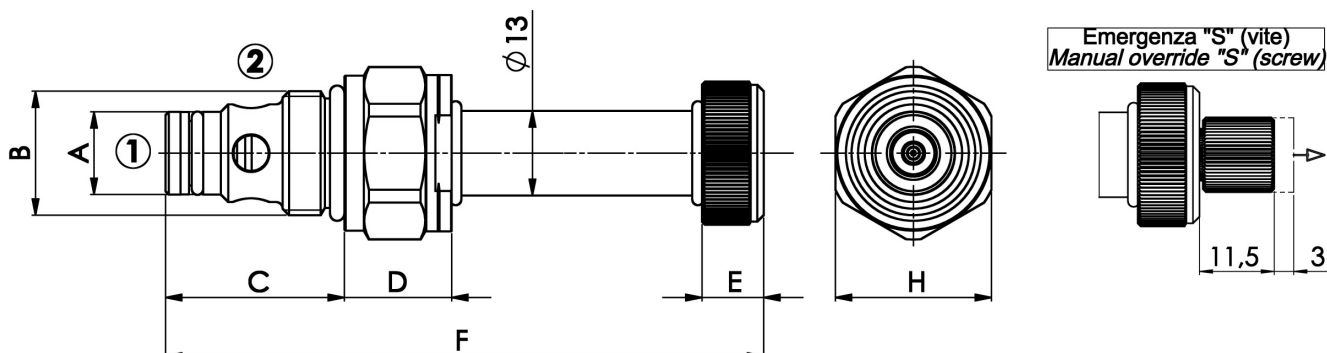


Valvola aperta (bobina eccitata)  
 Valve open (energized coil)



**Valvola elettrica 2 vie, pilotata, normalmente chiusa**  
**2 way, pilot operated electric valve, normally closed**

Rev.03-2016/08



TIPO TYPE	A	B	C	D	E	F	H	CAVITA' CAVITY	COPPIA DI SERRAGGIO INSTALLATION TORQUE	PESO WEIGHT
	mm	SAE	mm	mm	mm	mm	mm		Nm	Kg
FP-22-CP-S08-05/06	12.7	3/4"-16 UNF	27.5	16.5	9.5	92	24	23081	35 – 45	0.135
FP-22-CP-S08-05/06-S	12.7	3/4"-16 UNF	27.5	16.5	9.5	92	24	23081	35 – 45	0.145
FP-22-CP-S08-07/08	12.7	3/4"-16 UNF	27.5	16.5	9.5	92	24	23081	35 – 45	0.135
FP-22-CP-S08-07/08-S	12.7	3/4"-16 UNF	27.5	16.5	9.5	92	24	23081	35 – 45	0.145
FP-22-CP-S10-05/06	15.87	7/8"-14 UNF	32	17	9.5	97	27	23101	45 – 55	0.170
FP-22-CP-S10-05/06-S	15.87	7/8"-14 UNF	32	17	9.5	97	27	23101	45 – 55	0.180
FP-22-CP-S10-07/08	15.87	7/8"-14 UNF	32	17	9.5	97	27	23101	45 – 55	0.170
FP-22-CP-S10-07/08-S	15.87	7/8"-14 UNF	32	17	9.5	97	27	23101	45 – 55	0.180
FP-22-CP-S12-05/06	22.22	1 1/16"-12 UN	46	18	9.5	112	32	23121	55 – 65	0.270
FP-22-CP-S12-05/06-S	22.22	1 1/16"-12 UN	46	18	9.5	112	32	23121	55 – 65	0.280
FP-22-CP-S12-07/08	22.22	1 1/16"-12 UN	46	18	9.5	112	32	23121	55 – 65	0.270
FP-22-CP-S12-07/08-S	22.22	1 1/16"-12 UN	46	18	9.5	112	32	23121	55 – 65	0.280
FP-22-CP-S16-05/06	28.56	1 5/16"-12 UN	46.5	16.5	9.5	111	40	23161	80 – 90	0.380
FP-22-CP-S16-05/06-S	28.56	1 5/16"-12 UN	46.5	16.5	9.5	111	40	23161	80 – 90	0.380
FP-22-CP-S16-07/08	28.56	1 5/16"-12 UN	46.5	16.5	9.5	111	40	23161	80 – 90	0.380
FP-22-CP-S16-07/08-S	28.56	1 5/16"-12 UN	46.5	16.5	9.5	111	40	23161	80 – 90	0.380

Per i corpi in cavità SAE a 2 vie, vedere pagina catalogo generale W 150/1  
 For 2 way SAE cavity bodies, see page W 150/1 in technical catalogue

**ESEMPIO DI ORDINAZIONE - ORDERING CODE EXAMPLE**

**F P 2 2 C P S 0 8 0 5 \* \***

\* S08 – 3/4"-16 UNF  
 S10 – 7/8"-14 UNF  
 S12 – 1 1/16"-12 UN  
 S16 – 1 5/16"-12 UN  
 Dimensione - Dimension

05 – normalmente chiusa, unidirezionale – normally closed, unidirectional  
 06 – normalmente chiusa, bidirezionale – normally closed, bidirectional  
 \* 07 – normalmente chiusa, unidirezionale, extra-molla – normally closed, unidirectional, extra spring  
 08 – normalmente chiusa, bidirezionale, extra-molla – normally closed, bidirectional, extra spring  
 Schema idraulico – Hydraulic scheme

Guarnizioni – Seals:  
 V=Viton \*  
 Omettere se BUNA-N – Omit if BUNA-N  
 Emergenza – Manual override  
 S = vite - screw \*  
 Omettere se non richiesta – Omit if not required