

# Solenoid operated valves direct acting spool type 4-way 3-position Common cavity, Size 08

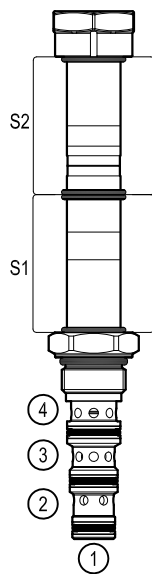
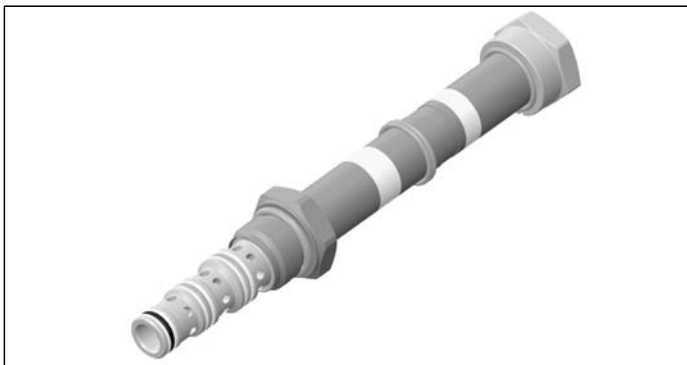
VED-16-08A-43

OD.14 - X - 58 - Y - Z - 00

**RE 18324-10**

Edition: 03.2020

Replaces: 06.2019



## Technical data

### General

Weight	0.14 kg (0.31 lbs)
Installation orientation	Unrestricted
Storage ambient temperature range	-40 to 100 °C (-40 to 212 °F)
Operating ambient temperature range	-30 to 90 °C (-22 to 194 °F)
Salt spray test to DIN EN ISO 9227:2017-07	500h

### Hydraulic

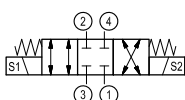
Max. operating pressure	up to 280 bar (4060 psi)
Max. admitted pressure port 1	50 bar (725 psi)
Max. flow	up to 15 l/min (4 gpm)
Max. internal leakage at 230 bar	40 cm³/min. (2.4 cu.in./min.)
Fatigue cycle life	* 1 million cycles at 250 bar
Fluid temperature range	-20 to 80 °C (-4 to 176 °F)
Fluids: Mineral-based or synthetics with lubricating properties at viscosities of 20 to 380 mm²/s (cSt)	
Installation torque	34 - 39 Nm (25 - 29 ft-lbs)
Recommended degree of fluid contamination	Nominal value max. 10 µm (NAS 8) ISO 4406 19/17/14
MTTFd	* 150 years see RE 18350-51
Cavity	CA-08A-4N see 18325-70
Seal kit for X= 31,32	code material no. RG08A4010530100 R930005582
Seal kit coil and standard cap	code material no. RG02Z0010000100 R930067869
Other technical data	See data sheet 18350-50

### Electrical

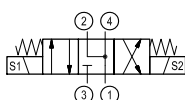
Type of voltage	DC voltage
Coil type	D36
Supply voltage	See data sheet 18325-90
Admitted voltage tolerance: -10% / +25% of nominal voltage at 60°C amb. T	
Power consumption	20 W
Type of protection	See data sheet 18325-90
Note: Coils must be ordered separately	

\* Valid only for Y=A=Standard

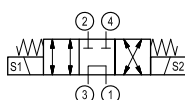
#### ▼ Version 31



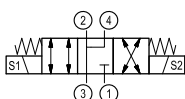
#### ▼ Version 32



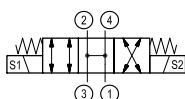
#### ▼ Version 37



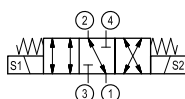
#### ▼ Version 33



#### ▼ Version 34

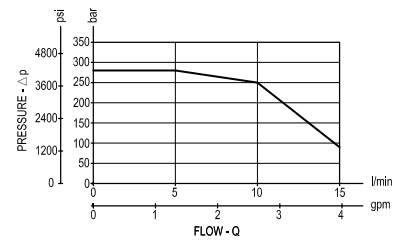
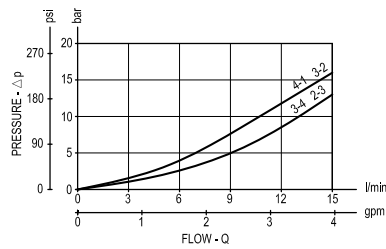
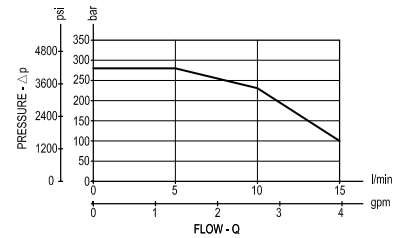
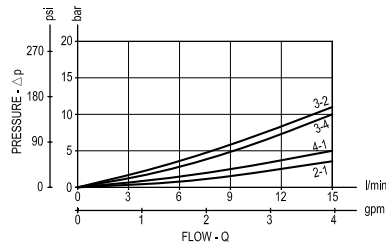


#### ▼ Version 36



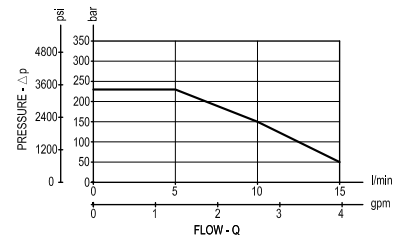
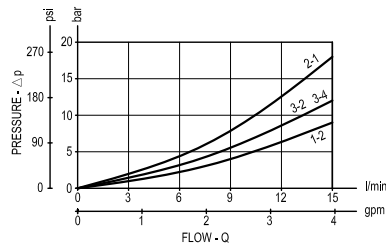


## Characteristic curves

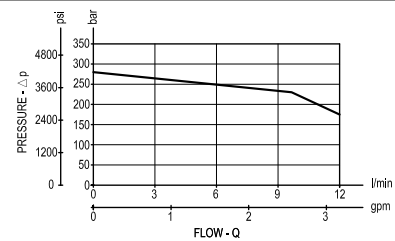
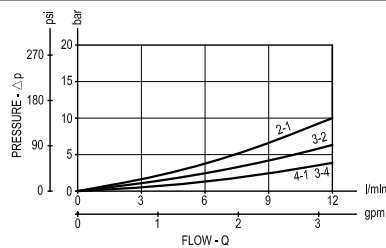
**Version 31****Performance limits at 100% duty cycle at 90°C and 60°C amb. T.****Version 32****Performance limits at 100% duty cycle at 90°C and 60°C amb. T.**

## Version 37

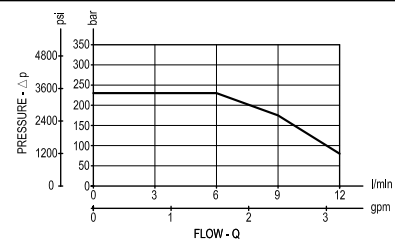
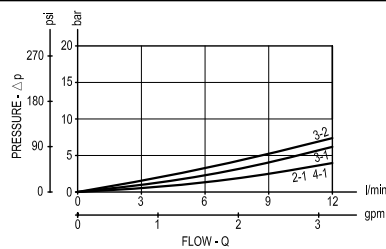
### Performance limits at 100% duty cycle at 45°C amb. T.

**Version 33**

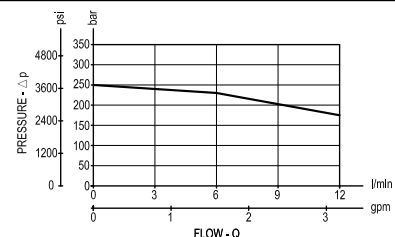
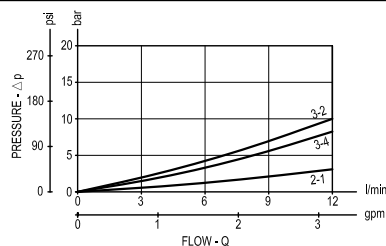
### Performance limits at 100% duty cycle at 60°C amb. T.

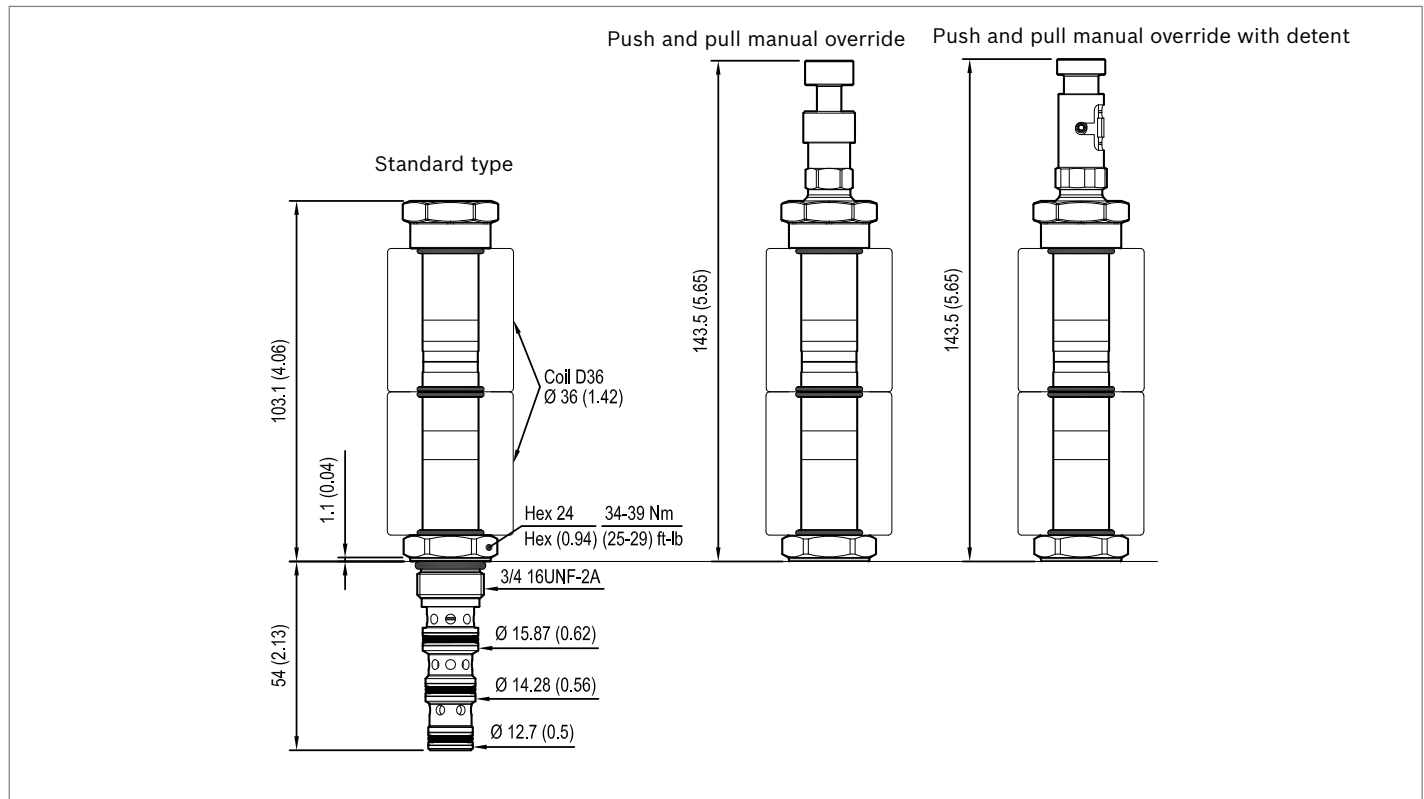


## Version 34

**Performance limits at 100% duty cycle at 60°C amb. T.**

## Version 36

**Performance limits at 100% duty cycle at 60°C amb. T.**

**Dimensions****Solenoid operated valves, direct acting  
spool type 4-way 3-position****Bosch Rexroth Oil Control S.p.A.**

Via Leonardo da Vinci 5  
P.O. Box no. 5  
41015 Nonantola – Modena, Italy  
Tel. +39 059 887 611  
Fax +39 059 547 848  
compact-hydraulics-cv@boschrexroth.com  
www.boschrexroth.com/compacthydraulics

© This document, as well as the data, specifications and other information set forth in it, are the exclusive property of Bosch Rexroth Oil Control S.p.a.. It may not be reproduced or given to third parties without its consent. The data specified above only serve to describe the product. No statements concerning a certain condition or suitability for a certain application can be derived from our information. The information given does not release the user from the obligation of own judgment and verification. It must be remembered that our products are subject to a natural process of wear and aging. Subject to change.