

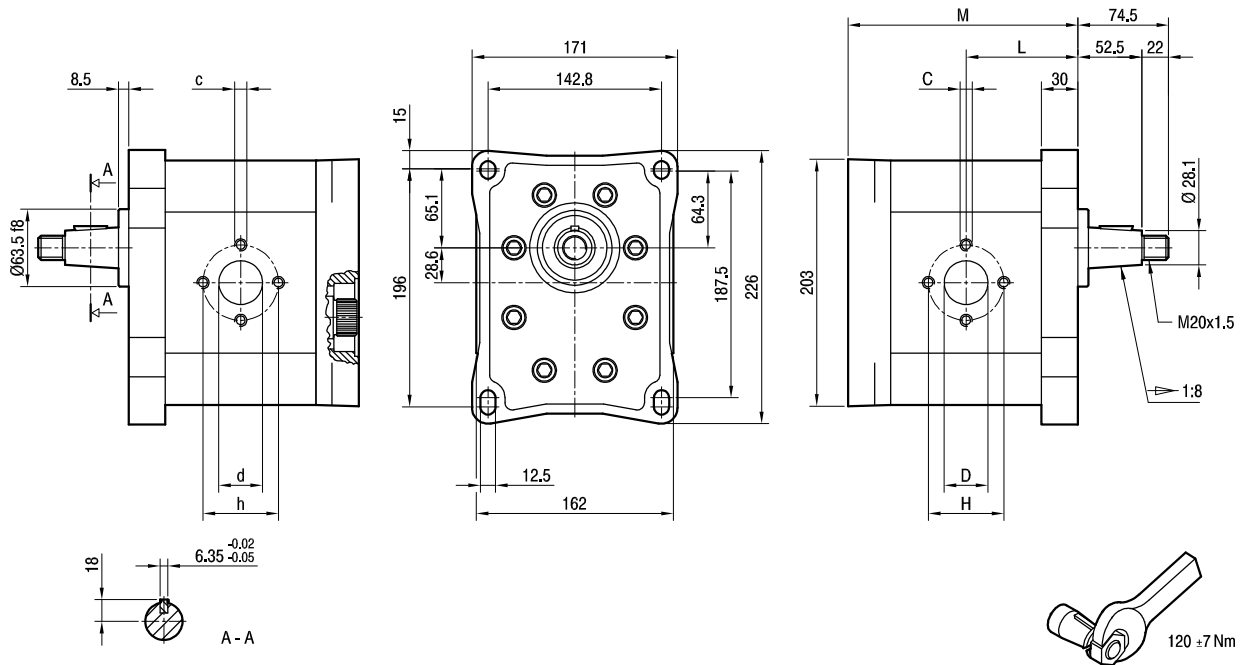
ALPA4

Parti accessorie a corredo della pompa standard: linguetta a disco (codice 522263), dado M20x1.5 (codice 523019), rosetta elastica spaccata (codice 523008).
Porte standard: filetti M10 e M12 profondità utile 21 mm.

Accessories supplied with the standard pump: woodruff key (code 522263), M20x1.5 exagonal nut (code 523019), washer (code 523008).
Standard ports: M10 and M12 threads depth 21 mm.

MANDATA
OUTLET

ASPIRAZIONE
INLET



TIPO TYPE	CILINDRATA DISPLACEMENT	PORTATA a 1500 giri/min FLOW at 1500 rev/min	PRESSIONI MASSIME MAX PRESSURE			VELOCIT ₃ MASSIMA MAX SPEED	DIMENSIONI DIMENSIONS							
			P ₁	P ₂	P ₃		L	M	d	D	h	H	c	C
			cm / giro (cm / rev)	litri/min (litres/min)	bar		bar	bar	mm	mm	mm	mm	mm	mm
ALPA4-D-130	87	124	240	260	280	2800	92	195	30	36	56	62	M10	M10
ALPA4-D-160	106	151	200	220	240	2300	96	203	30	36	56	62	M10	M10
ALPA4-D-190	128	182	180	200	220	2500	100,5	212	36	45	62	72,5	M10	M12
ALPA4-D-220	147	209	170	190	210	2200	104,5	220	36	45	62	72,5	M10	M12
ALPA4-D-250	166	237	160	170	190	2000	108,5	228	36	45	62	72,5	M10	M12
ALPA4-D-270	181	258	140	150	170	2400	111,5	234	45	56	72,5	92	M12	M12
ALPA4-D-300	200	285	130	140	150	2400	115,5	242	45	56	72,5	92	M12	M12