

**Features**

Connection by screwing together the two parts  
Disconnection by unscrewing the two parts  
Shut off by poppet valve  
Connectable under residual pressure  
Disconnection under residual pressure  
Interchangeability according to Faster Internal Standards

**Caratteristiche**

Connessione avvitando maschio e femmina  
Disconnessione svitando maschio e femmina  
Sistema a tenuta mediante valvola a funghetto  
Innestabile con pressione residua  
Disconnessione con pressione residua  
Interchangeabilità secondo Norma interna Faster

**Merkmale**

Verbindung durch Verschrauben der beiden Teile  
Entkuppeln durch Abschrauben  
Verschluss durch Kegellventil  
Kuppelbar unter Restdruck  
Entkuppelbar unter Restdruck  
Austauschbarkeit Faster internen Standard

**Caractéristiques**

Connexion en dévissant les deux parties  
Déconnexion en dévissant les deux parties  
Système d'étanchéité à clapet standard  
Connectable sous pression résiduelle  
Déconnexion avec une pression résiduelle  
Interchangeabilité conformément à la norme interne Faster

Fields of application  
Settori di applicazione  
Anwendungsbereiche  
Domaines d'applications

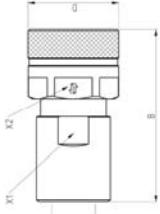


Size Base BG Taille	Working pressure Pressione di esercizio Pression de service	Flow Rate Portata Durchsatz Débit	Burst Pressures Pressione di scoppio Bersdruck Pression d'éclatement
	MPa (PSI)	l/min (GPM)	MPa (PSI)
6.3 1/4"	80 (11600)	8 (2.1)	240 (34800)
10 3/8"	80 (11600)	18 (4.7)	340 (49300)
12.5 1/2"	73 (10600)	40 (10.6)	220 (31900)
20 3/4"	73 (10600)	55 (14.7)	230 (33400)
32 1"	63 (9150)	100 (26)	190 (27600)
40 1 1/4"	60 (8700)	140 (37)	180 (26100)
50 2"	40 (5800)	300 (75)	150 (21800)
		1000 (264)	130 (18600)

mm	MPa (PSI)	MPa (PSI)	MPa (PSI)
6.3 1/4"	80 (11600)	240 (34800)	250 (36300)
10 3/8"	80 (11600)	340 (49300)	240 (34800)
12.5 1/2"	73 (10600)	220 (31900)	220 (31900)
20 3/4"	73 (10600)	230 (33400)	230 (33400)
32 1"	63 (9150)	190 (27600)	190 (27600)
40 1 1/4"	60 (8700)	180 (26100)	200 (29000)
50 2"	40 (5800)	150 (21800)	150 (21800)
		130 (18600)	105 (15250)

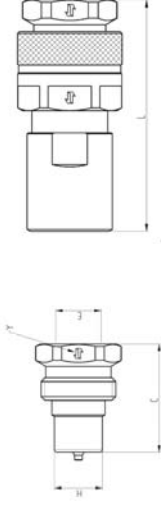
**Technical Specifications**

Technical Specifications	Specifiche Tecniche	Technischen Daten	Caratteristiche Tecniche
High grade carbon steel with heat treated wear parts	Acciaio ad alto tenore di carbonio con parti sollecitate, trattate termicamente	High Quality Karbonstahl Induktionsgeartet in besonders beanspruchter Stress zone	Acier à haute teneur en carbone avec traitement thermique des pièces d'usure
NBR Backup ring in PTFE	NBR Anello antiestrusione PTFE	NBR Stützring in PTFE	NBR Anneau anti-extrusion en PTFE
-25°C to +125°C (-13°F to +257°F)	-25°C a +125°C (-13°F a +257°F)	-25°C to +125°C (-13°F to +257°F)	-25°C à +125°C (-13°F à +257°F)
Mate500®	Mate500®	Mate500®	Mate500®
According to ISO 7241-2	Secondo la norma ISO 7241-2	Nach ISO 7241-2	Selon la norme ISO 7241-2



**Female - Femmina - Muffe - Femelle**

Size Base BG Taille	Thread Filetto Anchluss Flstange	Part Number Codice Articolo Artikeinummer Désignation	A	B	D	P	X	Weight Peso Gewicht Poids	Package Confezione Verpakking Coils
mm	inch.		mm (in)	mm (in)	mm (in)	mm (in)	mm (in)	g (lbs)	No.
6.3 1/4"	F	VWS 14 GAS F	1/4" BSP Female	68 (2.68)	30 (1.18)		22 (0.87)		
6.3 1/4"	F	VWS 14 NPT F	1/4" NPT Female	68 (2.68)	30 (1.18)		22 (0.87)		
10 3/8"	F	VWS 38 GAS F	3/8" BSP Female	76 (2.99)	40 (1.57)		30 (1.18)		
10 3/8"	F	VWS 38 NPT F	3/8" NPT Female	76 (2.99)	40 (1.57)		30 (1.18)		
12.5 1/2"	F	VWS 12 GAS F	1/2" BSP Female	87 (3.43)	45 (1.77)		34 (1.34)		
12.5 1/2"	F	VWS 12 NPT F	1/2" NPT Female	87 (3.43)	45 (1.77)		34 (1.34)		
20 3/4"	F	VWS 34 GAS F	3/4" BSP Female	106 (4.17)	55 (2.17)		41 (1.61)		
20 3/4"	F	VWS 34 NPT F	3/4" NPT Female	106 (4.17)	55 (2.17)		41 (1.61)		
25 1"	F	VWS 1 GAS F	1" BSP Female	124 (4.88)	60 (2.36)		50 (1.97)		
25 1"	F	VWS 1 NPT F	1" NPT Female	124 (4.88)	60 (2.36)		50 (1.97)		
32 1 1/4"	F	VWS14 GAS F	1 1/4" BSP Female	153 (6.02)	80 (3.15)		65 (2.56)		
32 1 1/4"	F	VWS14 NPT F	1 1/4" NPT Female	153 (6.02)	80 (3.15)		65 (2.56)		
40 1 1/2"	F	VWS112 GAS F	1 1/2" BSP Female	172 (6.77)	98 (3.86)		75 (2.95)		
40 1 1/2"	F	VWS112 NPT F	1 1/2" NPT Female	172 (6.77)	98 (3.86)		75 (2.95)		
50 2"	F	VWS 2 GAS F	2" BSP Female	207 (8.15)	129 (5.08)		100 (3.94)		
50 2"	F	VWS 2 NPT F	2" NPT Female	207 (8.15)	129 (5.08)		100 (3.94)		



**Male - Maschio - Stecker - Male**

Size Base BG Taille	Thread Filetto Anchluss Flstange	Part Number Codice Articolo Artikeinummer Désignation	A	B	C	H	L	P	Y	Weight Peso Gewicht Poids	Package Confezione Verpakking Coils
mm	inch.		mm (in)	mm (in)	mm (in)	mm (in)	mm (in)	mm (in)	mm (in)	g (lbs)	No.
6.3 1/4"	F	VWS 14 GAS M	1/4" BSP Female	43 (1.69)	14.1 (0.56)		B+C-27 (1.06)		25 (0.98)		
6.3 1/4"	F	VWS 14 NPT M	1/4" NPT Female	43 (1.69)	14.1 (0.56)		B+C-27 (1.06)		25 (0.98)		
10 3/8"	F	VWS 38 GAS M	3/8" BSP Female	48 (1.89)	18.9 (0.74)		B+C-34 (1.34)		32 (1.26)		
10 3/8"	F	VWS 38 NPT M	3/8" NPT Female	48 (1.89)	18.9 (0.74)		B+C-34 (1.34)		32 (1.26)		
12.5 1/2"	F	VWS 12 GAS M	1/2" BSP Female	53 (2.09)	20.5 (0.81)		B+C-38 (1.50)		34 (1.34)		
12.5 1/2"	F	VWS 12 NPT M	1/2" NPT Female	53 (2.09)	20.5 (0.81)		B+C-38 (1.50)		34 (1.34)		
20 3/4"	F	VWS 34 GAS M	3/4" BSP Female	63 (2.48)	27.9 (1.10)		B+C-48 (1.89)		45 (1.81)		
20 3/4"	F	VWS 34 NPT M	3/4" NPT Female	63 (2.48)	27.9 (1.10)		B+C-48 (1.89)		45 (1.81)		
25 1"	F	VWS 1 GAS M	1" BSP Female	72 (2.83)	31.3 (1.23)		B+C-57 (2.24)		50 (1.97)		
25 1"	F	VWS 1 NPT M	1" NPT Female	72 (2.83)	31.3 (1.23)		B+C-57 (2.24)		50 (1.97)		
32 1 1/4"	F	VWS114 GAS M	1 1/4" BSP Female	86 (3.39)	43.9 (1.73)		B+C-72 (2.83)		65 (2.56)		
32 1 1/4"	F	VWS114 NPT M	1 1/4" NPT Female	86 (3.39)	43.9 (1.73)		B+C-72 (2.83)		65 (2.56)		
40 1 1/2"	F	VWS112 GAS M	1 1/2" BSP Female	95 (3.74)	53.4 (2.10)		B+C-79 (3.11)		80 (3.15)		
40 1 1/2"	F	VWS112 NPT M	1 1/2" NPT Female	95 (3.74)	53.4 (2.10)		B+C-79 (3.11)		80 (3.15)		
50 2"	F	VWS 2 GAS M	2" BSP Female	118 (4.65)	81.9 (3.22)		B+C-98 (3.86)		110 (4.33)		
50 2"	F	VWS 2 NPT M	2" NPT Female	118 (4.65)	81.9 (3.22)		B+C-98 (3.86)		110 (4.33)		



Accessories - Accessori - Zubehör - Accessoires

Size Base BG Taille	Dust protections Tappi Staubschutzteile Capuchons		Dust protections Tappi Staubschutzteile Capuchons		Seal Kits Guarnizioni di ricambio Ersatzdichtungen Joints	Packaging Confezione Verpackung Coils
	PVC	Aluminum	PVC	Aluminum		
mm	Part Number Codice Articolo Artikelnummer Designation	Part Number Codice Articolo Artikelnummer Designation	Part Number Codice Articolo Artikelnummer Designation	Part Number Codice Articolo Artikelnummer Designation		
6.3	TMV 14 S	TMV 14 S	TFV 14 S	TFV 14 S	SK NV 14	1*
10	TMV 38 S	TMV 38 S	TFV 38 S	TFV 38 S	SK NV 38	1*
12.5	TMV 12 SR	TMV 12 S	TFV 12 SR	TFV 12 S	SK NV 12	1*
20	TMV 34 S	TMV 34 S	TFV 34 S	TFV 34 S	SK NV 34	1*
25	TMV 1 S	TMV 1 S	TFV 1 S	TFV 1 S	SK NV 1	1*
32	TMV114 S	TMV114 S	TFV114 S	TFV114 S	SK VVS 114	1**
40	TMV112 S	TMV112 S	TFV112 S	TFV112 S	SK VVS 112	1**
50	TMV 2 S	TMV 2 S	TFV 2 S	TFV 2 S	SK VVS 2	1**

\*10 O-rings + 10 PTFE rings \*\*5 O-rings + 5 PTFE rings

Features	Caratteristiche	Merkmal	Características
Connection by screwing together the two parts	Connessione avvitando maschio e femmina	Verbindung durch Verschrauben der beiden Teile	Connexion en dévissant les deux parties
Disconnection by unscrewing the two parts	Disconnessione svitando maschio e femmina	Entkuppeln durch Abschrauben	Déconnexion en dévissant les deux parties
Shut off by poppet valve	Sistema di tenuta mediante valvola a funghetto	Verschluß durch Kegventil	Système d'étanchéité à clapet standard
Connectable under residual pressure	Instabile con pressione residua	Kuppelbar unter Restdruck	Connectable sous pression résiduelle
Disconnection under residual pressure	Disconnessione con pressione residua	Entkuppelbar unter Restdruck	Déconnexion avec une pression résiduelle
Interchangeability according to internal Standards	Intercambiabilità secondo Norma interna FASTER	Austauschbarkeit Foster internen Standard	Interchangeability conformément à la norme interne FASTER

Fields of application  
Settori di applicazione  
Anwendungsbereiche  
Domaines d'application

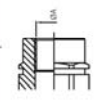


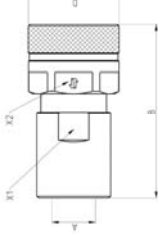
Size Base BG Taille	Working pressure Pressione di esercizio Betriebsdruck Pression de service	Flow Rate Portata Durchsatz Débit	Burst Pressure Pressione di scoppio Berstdruck Pression d'éclatement			
mm	inchi.	MPa (PSI)	l/min (GPM)	MPa (PSI)	MPa (PSI)	MPa (PSI)
6.3	1/4"	60 (8700)	8 (2.1)	280 (40600)	180 (26000)	280 (40600)
10	3/8"	65 (9500)	18 (4.8)	200 (29000)	195 (28500)	250 (36300)
12.5	1/2"	60 (8700)	30 (7.9)	195 (28500)	180 (26000)	245 (35500)
20	3/4"	50 (7300)	45 (12)	160 (23200)	150 (21800)	190 (27600)
25	1"	46 (6700)	90 (24)	140 (20300)	150 (21800)	160 (23200)
32	1 1/4"	38 (5500)	140 (37)	120 (17400)	115 (16700)	150 (21800)
40	1 1/2"	36 (5200)	300 (79)	140 (20300)	110 (16000)	155 (22500)
50	2"	21 (3000)	1000 (264)	75 (10900)	65 (9500)	85 (12500)

Technical Specifications	Specifiche Tecniche	Technischen Daten	Caractéristiques Techniques
Stainless Steel AISI 316	Acciaio Inox AISI 316	Edelstahl AISI 316	Acier inoxydable AISI 316
Viton Backup ring in PTFE	Viton Anello antiestrusione PTFE	Viton Stützing in PTFE	Viton Anneau anti-extrusion en PTFE
-20°C to +200°C (-4°F to + 392°F)	-20°C a + 200°C (-4°F a + 392°F)	-20°C to +200°C (-4°F to + 392°F)	-20°C à +200°C (-4°F à + 392°F)
According to ISO 7241-2	Secondo la norma ISO 7241-2	Nach ISO 7241-2	Selön la norme ISO 7241-2



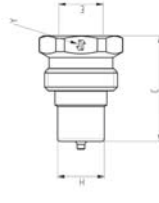
Thread Filetto Anschluss Filetage





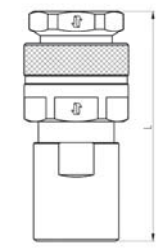
**Female - Femmina - Muffe - Femelle**

Size Base BG Taille	inch.	Thread Filetto Anschluss Filetage	Part Number Codice Articolo Artikelnummer Designation	A	B	D	X1	X2	Weight Peso Gewicht Poids	Package Confezione Verpackung Collis	No.
mm				mm (in)	mm (in)	mm (in)	mm (in)	mm (in)	g (lbs)		
6.3	1/4"	F	VVS 14 GAS F 2V	1/4" BSP Female	68 (2.68)	30 (1.18)	22 (0.87)	27 (1.06)			
6.3	1/4"	F	VVS 14 NPT F 2V	1/4" NPT Female	68 (2.68)	30 (1.18)	22 (0.87)	27 (1.06)			
10	3/8"	F	VVS 38 GAS F 2V	3/8" BSP Female	76 (2.99)	40 (1.57)	30 (1.18)	36 (1.42)			
10	3/8"	F	VVS 38 NPT F 2V	3/8" NPT Female	76 (2.99)	40 (1.57)	30 (1.18)	36 (1.42)			
12.5	1/2"	F	VVS 12 GAS F 2V	1/2" BSP Female	87 (3.43)	45 (1.77)	34 (1.34)	41 (1.61)			
12.5	1/2"	F	VVS 12 NPT F 2V	1/2" NPT Female	87 (3.43)	45 (1.77)	34 (1.34)	41 (1.61)			
20	3/4"	F	VVS 34 GAS F 2V	3/4" BSP Female	106 (4.17)	55 (2.17)	41 (1.61)	50 (1.97)			
20	3/4"	F	VVS 34 NPT F 2V	3/4" NPT Female	106 (4.17)	55 (2.17)	41 (1.61)	50 (1.97)			
25	1"	F	VVS 1 GAS F 2V	1" BSP Female	124 (4.88)	60 (2.36)	50 (1.97)	55 (2.16)			
25	1"	F	VVS 1 NPT F 2V	1" NPT Female	124 (4.88)	60 (2.36)	50 (1.97)	55 (2.16)			
32	1 1/4"	F	VVS114 GAS F 2V	1 1/4" BSP Female	153 (6.02)	80 (3.15)	65 (2.56)	75 (2.95)			
32	1 1/4"	F	VVS114 NPT F 2V	1 1/4" NPT Female	153 (6.02)	80 (3.15)	65 (2.56)	75 (2.95)			
40	1 1/2"	F	VVS112 GAS F 2V	1 1/2" BSP Female	172 (6.77)	98 (3.86)	75 (2.95)	90 (3.54)			
40	1 1/2"	F	VVS112 NPT F 2V	1 1/2" NPT Female	172 (6.77)	98 (3.86)	75 (2.95)	90 (3.54)			
50	2"	F	VVS 2 GAS F 2V	2" BSP Female	207 (8.15)	129 (5.08)	100 (3.94)	125 (4.92)			
50	2"	F	VVS 2 NPT F 2V	2" NPT Female	207 (8.15)	129 (5.08)	100 (3.94)	125 (4.92)			



**Male - Maschio - Stecker - Male**

Size Base BG Taille	inch.	Thread Filetto Anschluss Filetage	Part Number Codice Articolo Artikelnummer Designation	E	C	H	L	P	Y	Weight Peso Gewicht Poids	Package Confezione Verpackung Collis	No.
mm				mm (in)	mm (in)	mm (in)	mm (in)	mm (in)	mm (in)	g (lbs)		
6.3	1/4"	F	VVS 14 GAS M 2V	1/4" BSP Female	43 (1.69)	14.1 (0.56)	B+C-27 (1.06)			25 (0.98)		
6.3	1/4"	F	VVS 14 NPT M 2V	1/4" NPT Female	43 (1.69)	14.1 (0.56)	B+C-27 (1.06)			25 (0.98)		
10	3/8"	F	VVS 38 GAS M 2V	3/8" BSP Female	48 (1.89)	18.9 (0.74)	B+C-34 (1.34)			32 (1.26)		
10	3/8"	F	VVS 38 NPT M 2V	3/8" NPT Female	48 (1.89)	18.9 (0.74)	B+C-34 (1.34)			32 (1.26)		
12.5	1/2"	F	VVS 12 GAS M 2V	1/2" BSP Female	53 (2.09)	20.5 (0.81)	B+C-38 (1.50)			34 (1.34)		
12.5	1/2"	F	VVS 12 NPT M 2V	1/2" NPT Female	53 (2.09)	20.5 (0.81)	B+C-38 (1.50)			34 (1.34)		
20	3/4"	F	VVS 34 GAS M 2V	3/4" BSP Female	63 (2.48)	27.9 (1.10)	B+C-48 (1.89)			46 (1.81)		
20	3/4"	F	VVS 34 NPT M 2V	3/4" NPT Female	63 (2.48)	27.9 (1.10)	B+C-48 (1.89)			46 (1.81)		
25	1"	F	VVS 1 GAS M 2V	1" BSP Female	72 (2.83)	31.3 (1.23)	B+C-57 (2.24)			50 (1.97)		
25	1"	F	VVS 1 NPT M 2V	1" NPT Female	72 (2.83)	31.3 (1.23)	B+C-57 (2.24)			50 (1.97)		
32	1 1/4"	F	VVS114 GAS M 2V	1 1/4" BSP Female	86 (3.39)	43.9 (1.73)	B+C-72 (2.83)			65 (2.56)		
32	1 1/4"	F	VVS114 NPT M 2V	1 1/4" NPT Female	86 (3.39)	43.9 (1.73)	B+C-72 (2.83)			65 (2.56)		
40	1 1/2"	F	VVS112 GAS M 2V	1 1/2" BSP Female	95 (3.74)	53.4 (2.10)	B+C-79 (3.11)			80 (3.15)		
40	1 1/2"	F	VVS112 NPT M 2V	1 1/2" NPT Female	95 (3.74)	53.4 (2.10)	B+C-79 (3.11)			80 (3.15)		
50	2"	F	VVS 2 GAS M 2V	2" BSP Female	118 (4.65)	81.9 (3.22)	B+C-98 (3.86)			110 (4.33)		
50	2"	F	VVS 2 NPT M 2V	2" NPT Female	118 (4.65)	81.9 (3.22)	B+C-98 (3.86)			110 (4.33)		



**Accessories - Accessori - Zubehör - Accessoires**

Size Base BG Taille	inch.	Dust protections Protezioni Schutzteile Capuchons	Part Number Codice Articolo Artikelnummer Designation	Material	Dust protections Protezioni Schutzteile Capuchons	Part Number Codice Articolo Artikelnummer Designation	Material	Seal Kits Guarnizioni di ricambio Erstzudichtungen Joints	Package Confezione Verpackung Collis
mm				Aluminum			Aluminum		
6.3	1/4"		TMV 14 S			TFV 14 S		N/A	
10	3/8"		TMV 38 S			TFV 38 S		N/A	
12.5	1/2"		TMV 12 S			TFV 12 S		N/A	
20	3/4"		TMV 34 S			TFV 34 S		N/A	
25	1"		TMV 1 S			TFV 1 S		N/A	
32	1 1/4"		TMV114 S			TFV114 S		N/A	
40	1 1/2"		TMV112 S			TFV112 S		N/A	
50	2"		TMV 2 S			TFV 2 S		N/A	

**Thread Filetto Anschluss Filetage**

